



# Organizational Chart 2019



**RIVERLAND**  
Community College



MINNESOTA STATE

# Organizational Charts

The departmental organizational charts for Riverland Community College are displayed below. Click on each link below to view detailed information.

- [Office of the President](#)
- [Academic & Student Affairs](#)
- [Communications, Media Relations & Marketing](#)
- [Customized Training](#)
- [Diversity, Grants & Institutional Research](#)
- [Finance and Operations](#)
- [Human Resources](#)
- [Institutional Advancement](#)
- [Technology & Learning Resources](#)

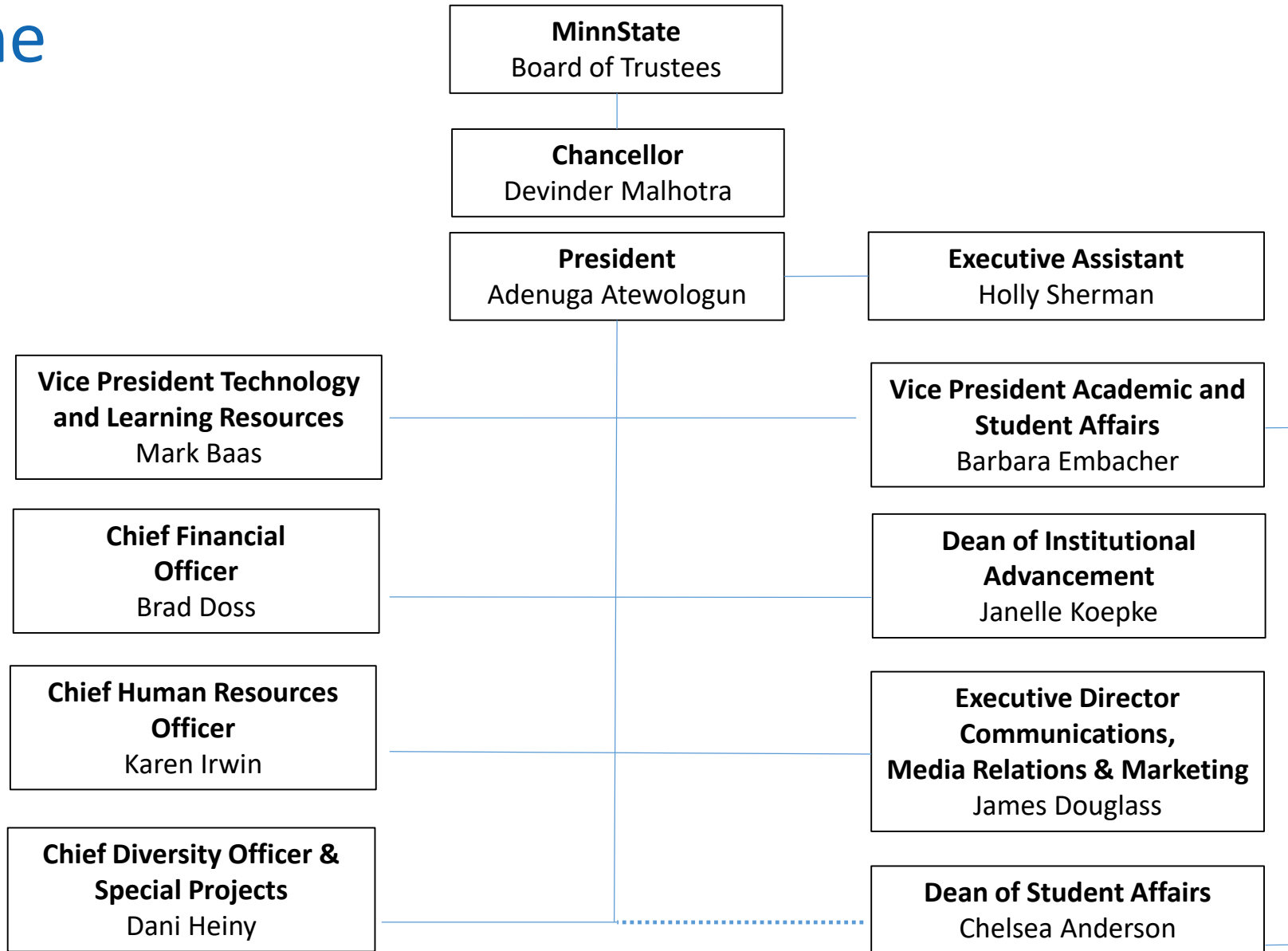
## Academic Affairs

- [Agriculture, Trades, Technology, Transportation & Safety](#)
- [Liberal Arts, Public Service & Business](#)
- [Nursing, Health & Wellness](#)

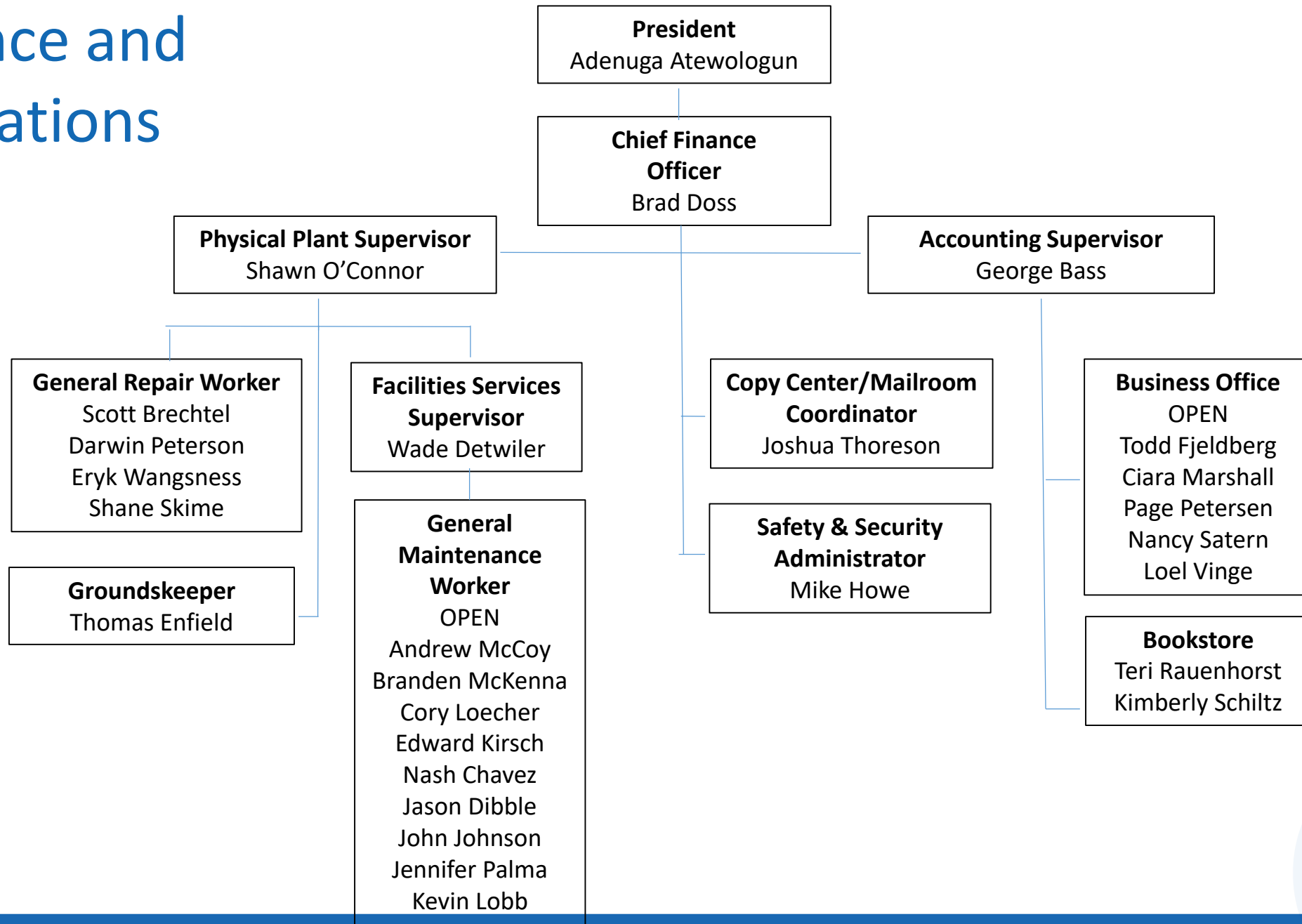
## Student Affairs

- [Admissions](#)
- [Advising Services](#)
- [Athletics](#)
- [Financial Aid](#)
- [Records & Registration](#)
- [Student Success Center](#)
- [TRiO/Student Support Services](#)

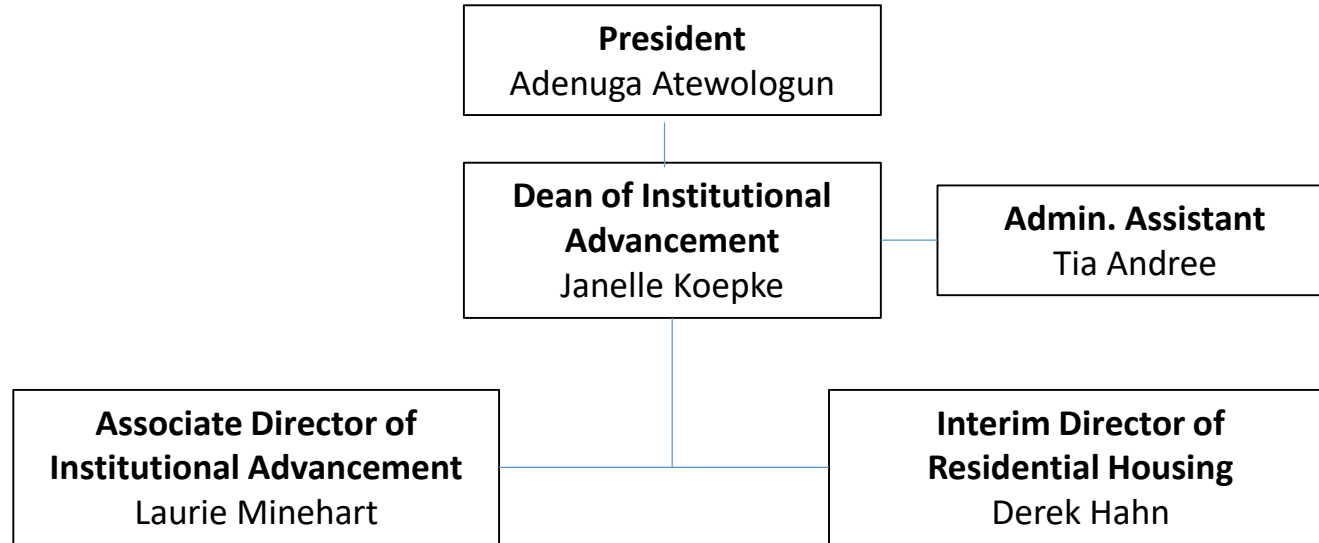
# Office of the President



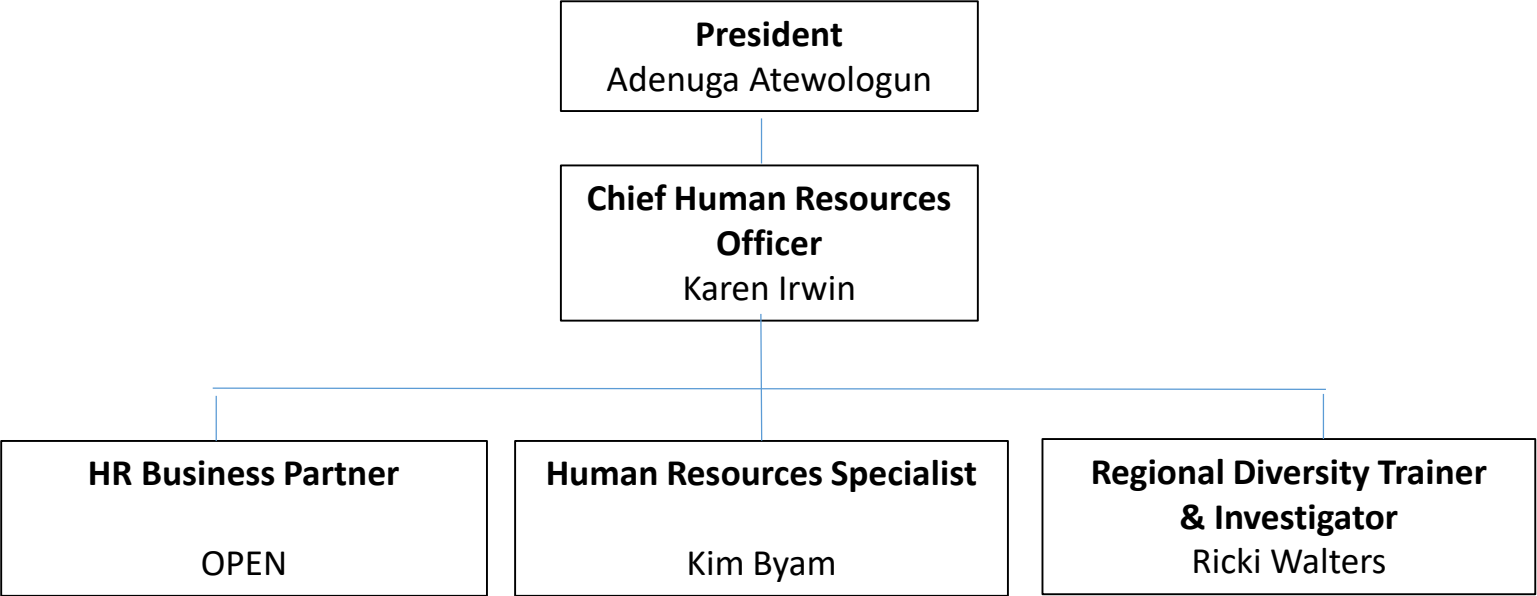
# Finance and Operations



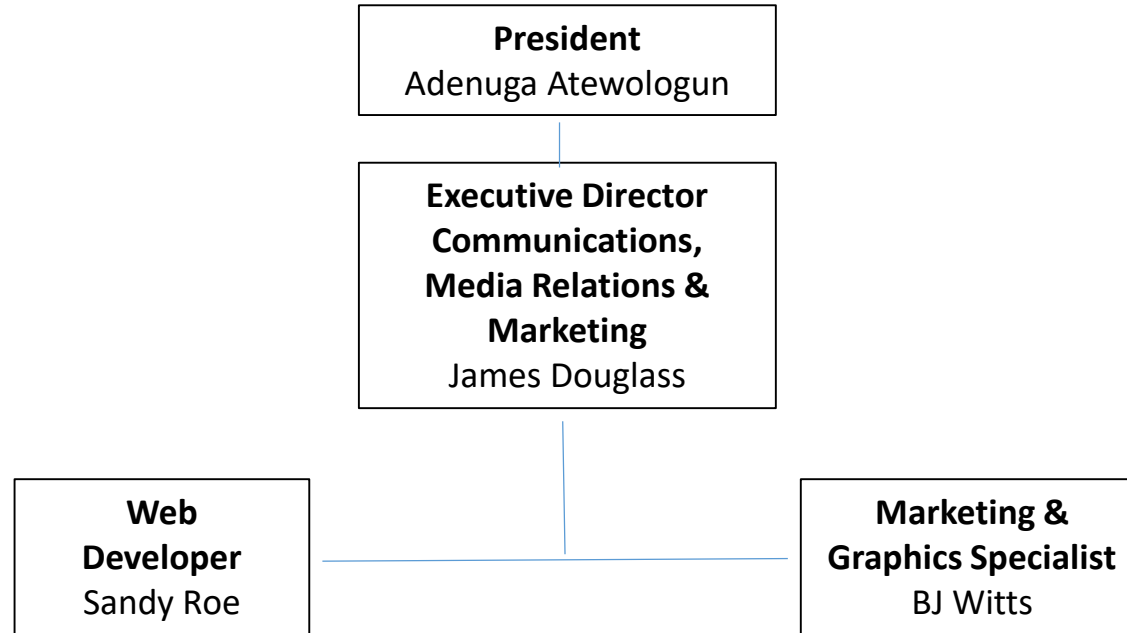
# Institutional Advancement



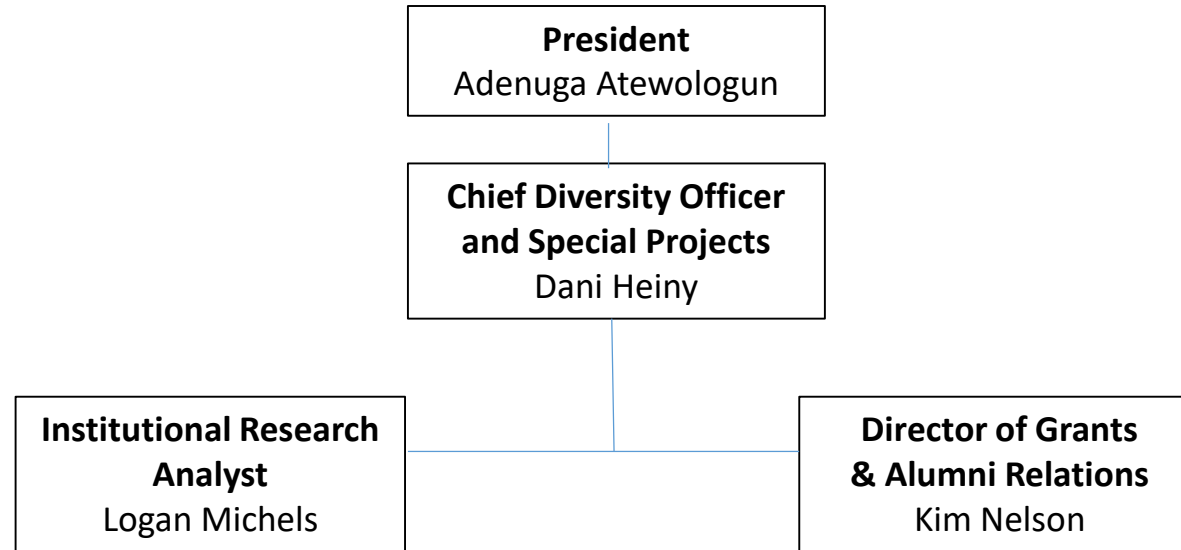
# Human Resources



# Communications, Media Relations & Marketing



# Diversity, Grants & Institutional Research





# Academic and Student Affairs



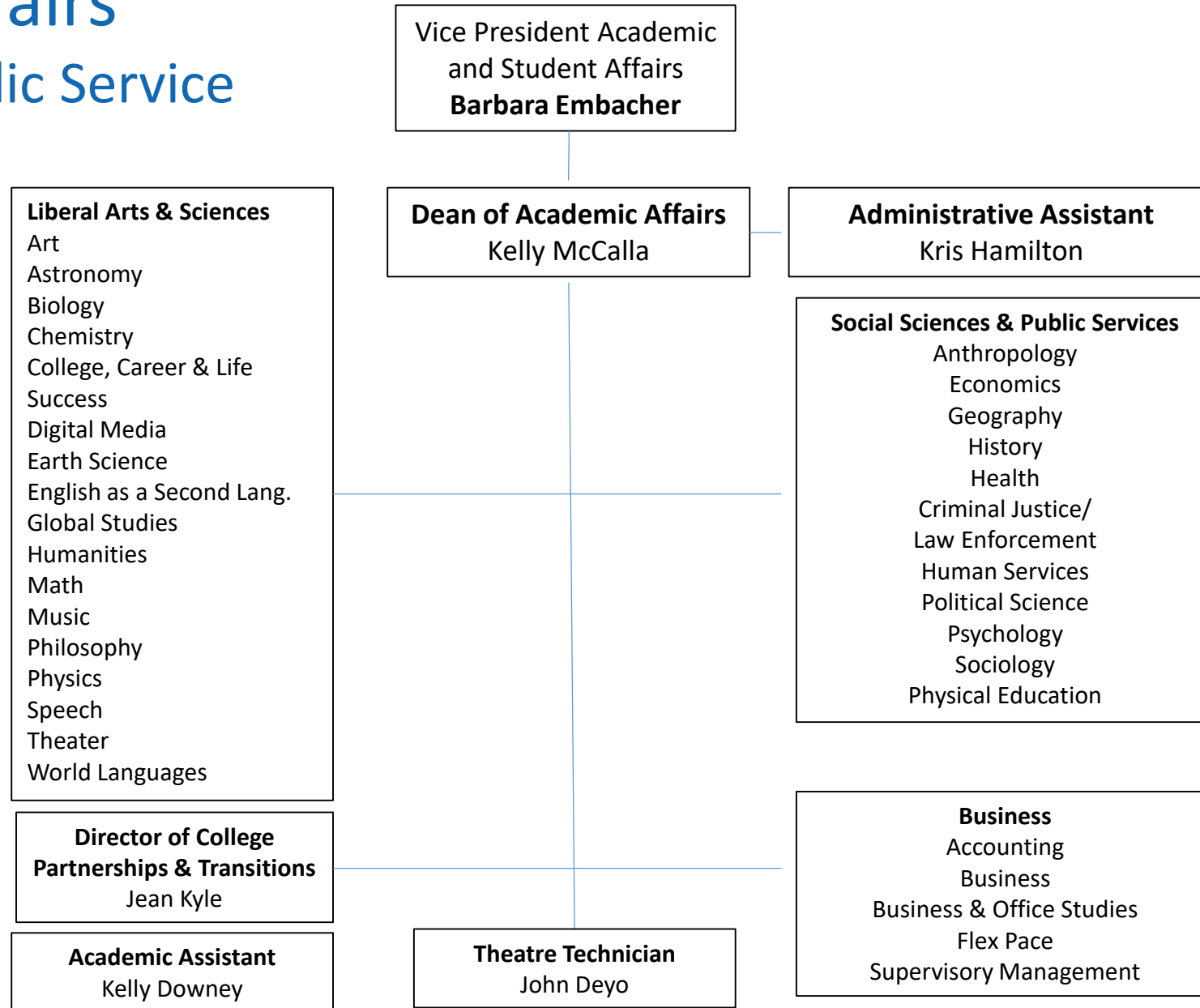
**Vice President Academic and Student Affairs**  
Barbara Embacher

**Administrative Assistant**  
Carrie Braaten



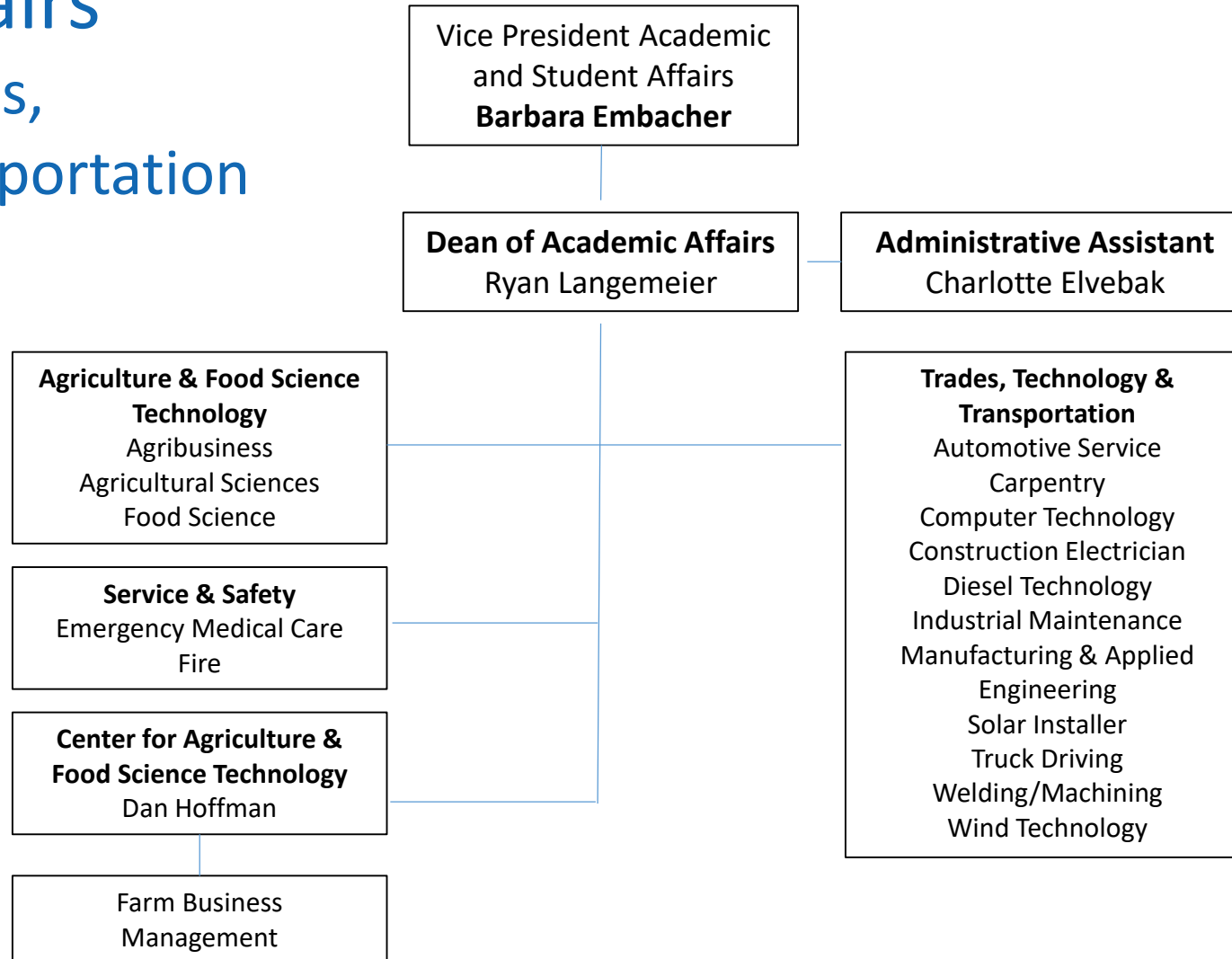
# Academic Affairs

## Liberal Arts, Public Service & Business



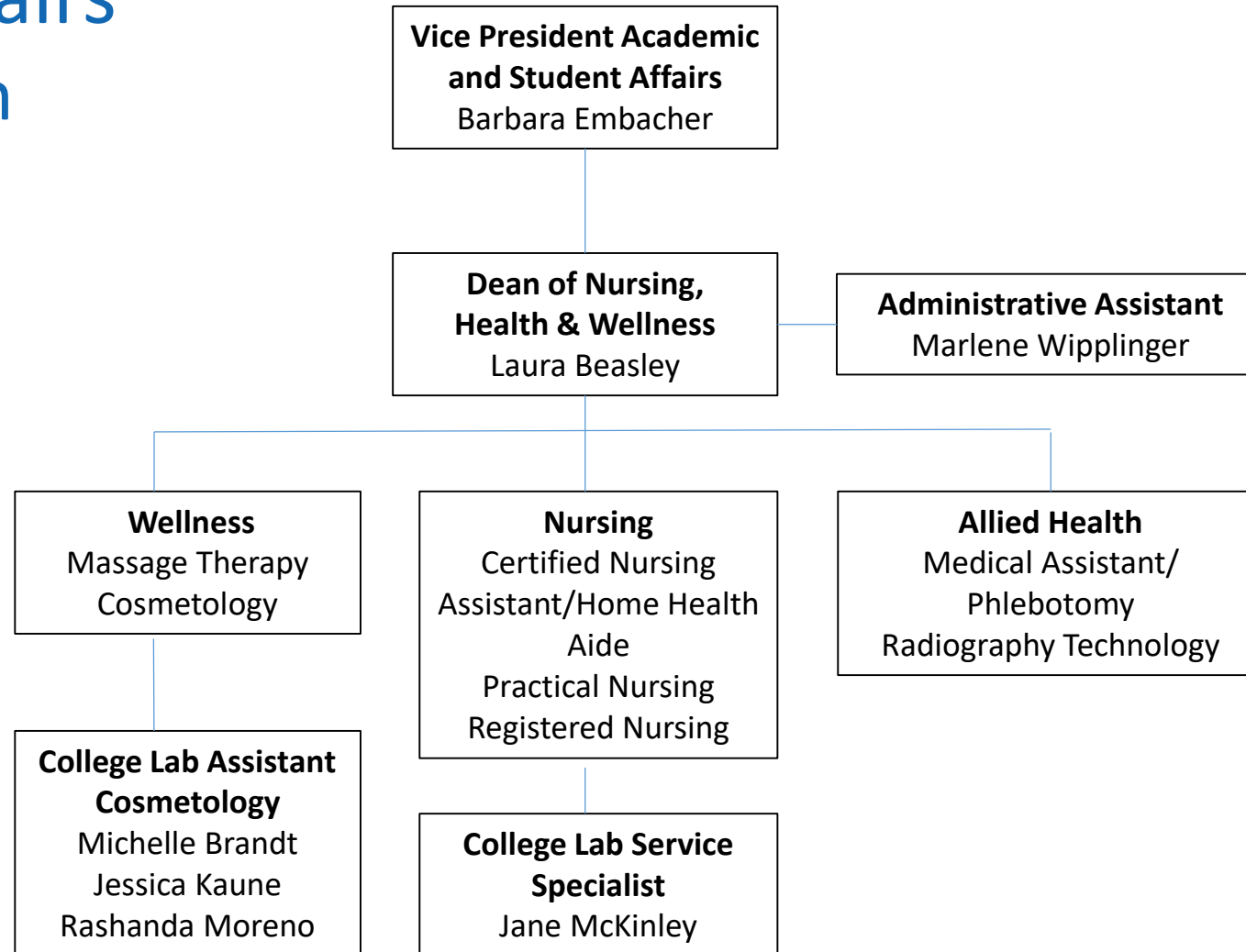
# Academic Affairs

Agriculture, Trades,  
Technology, Transportation  
& Safety



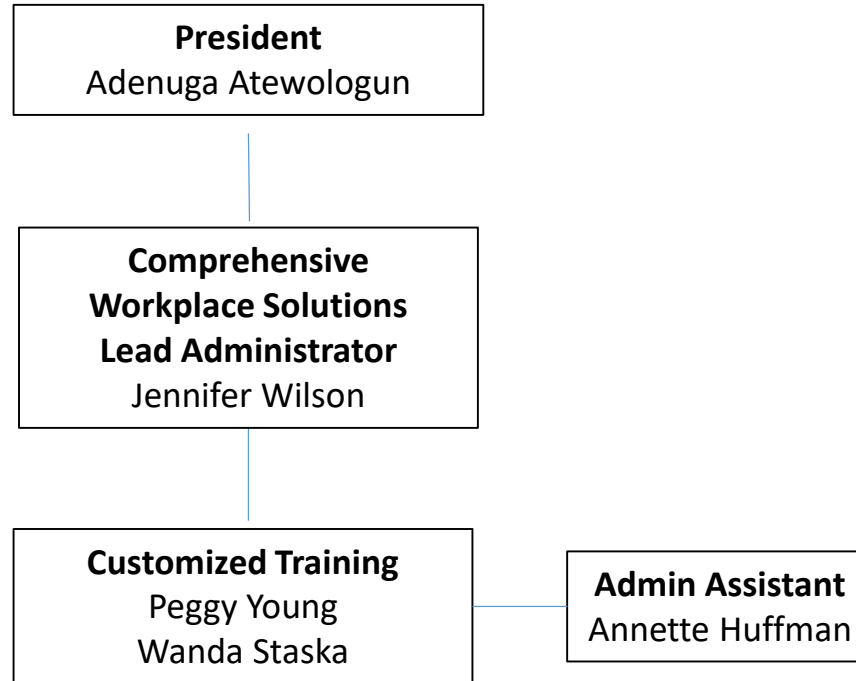


# Academic Affairs Nursing, Health And Wellness

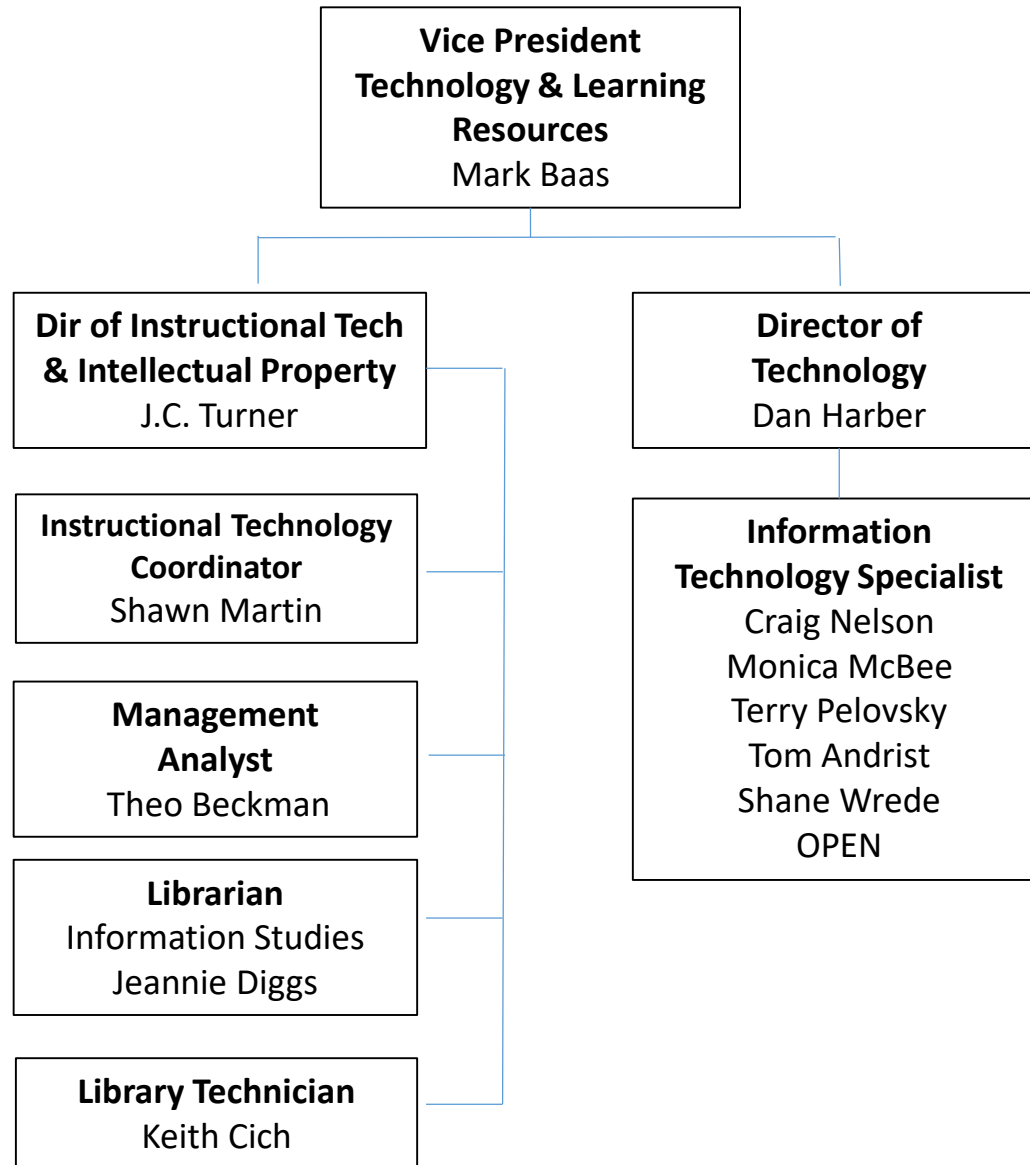




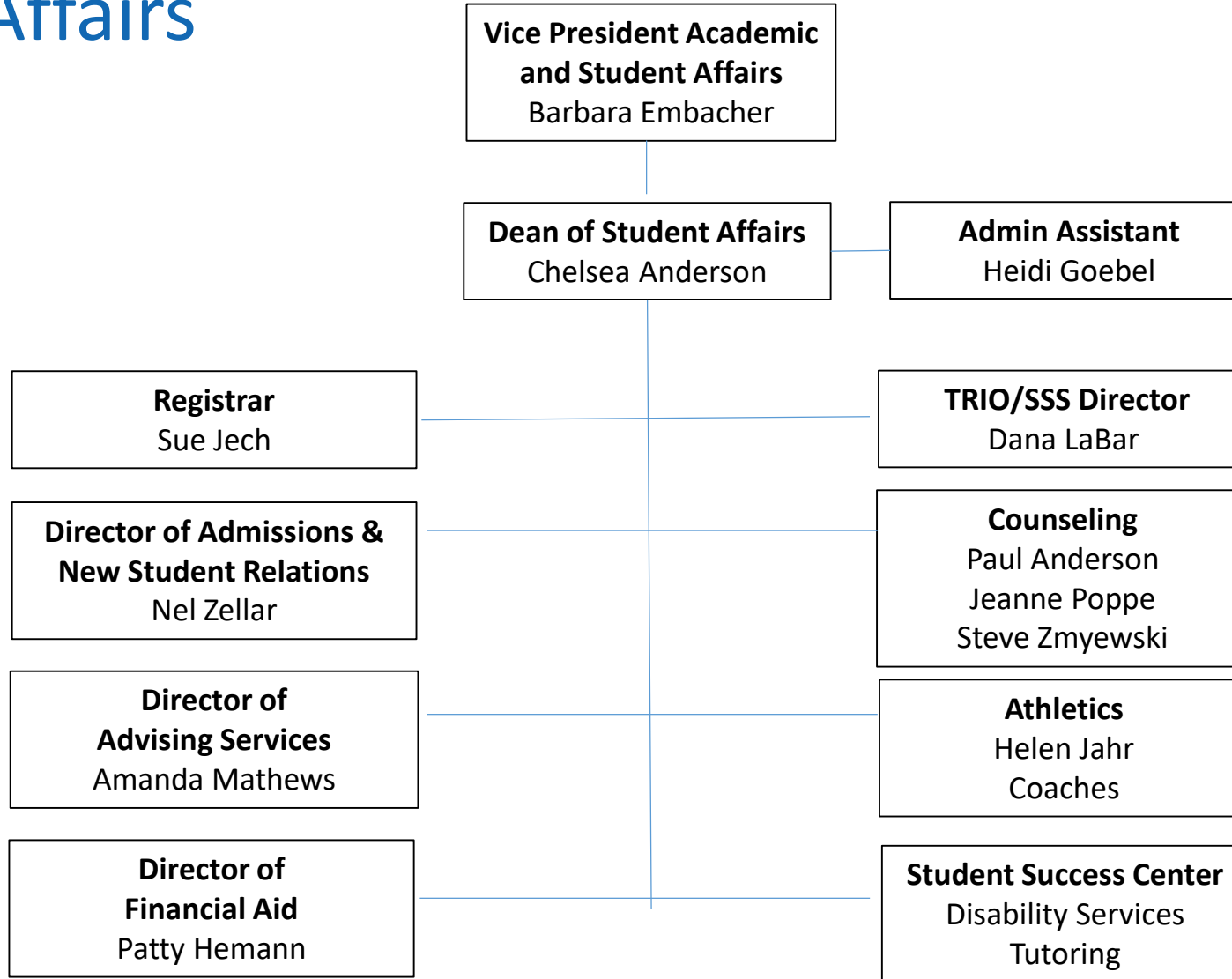
# Customized Training



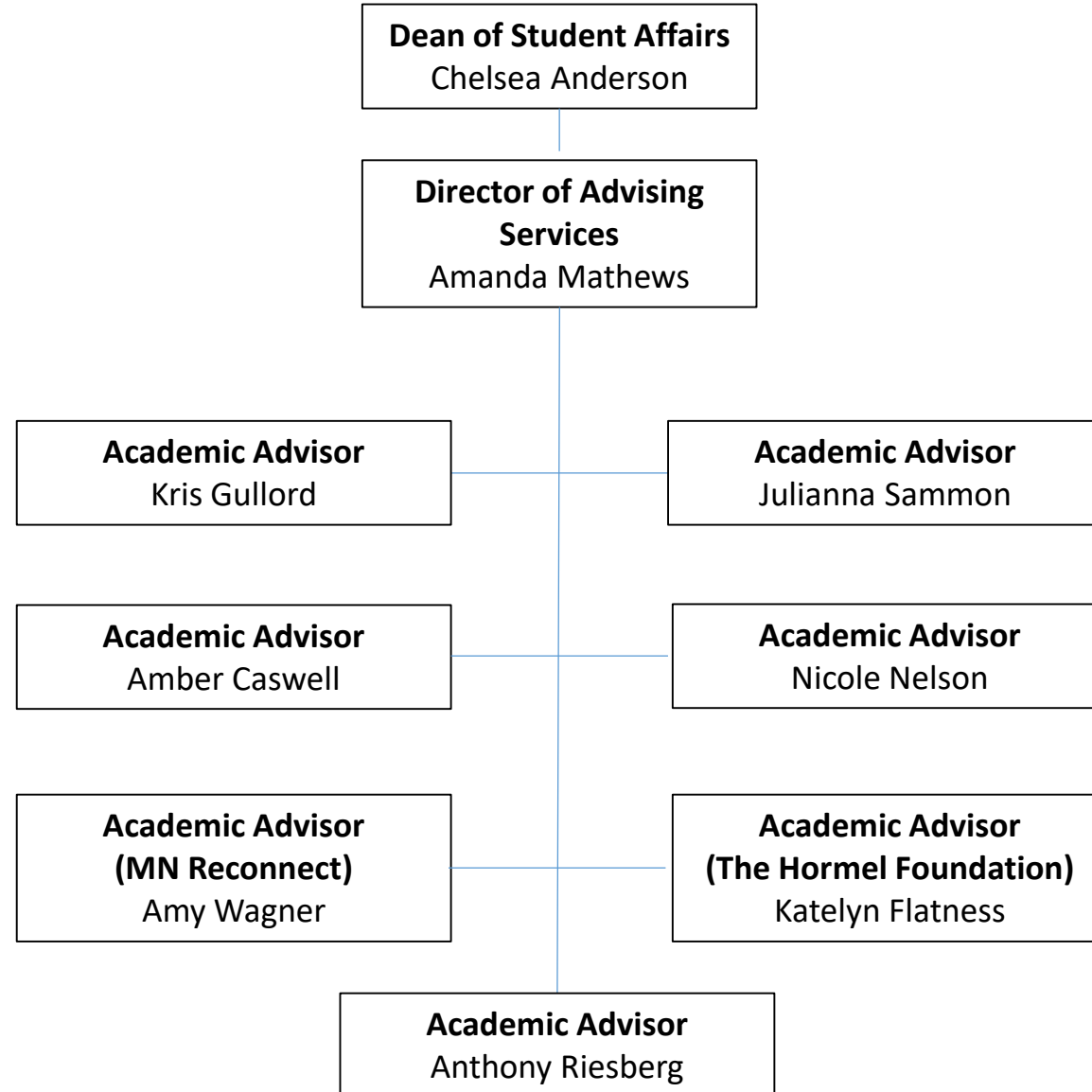
# Technology & Learning Resources



# Student Affairs

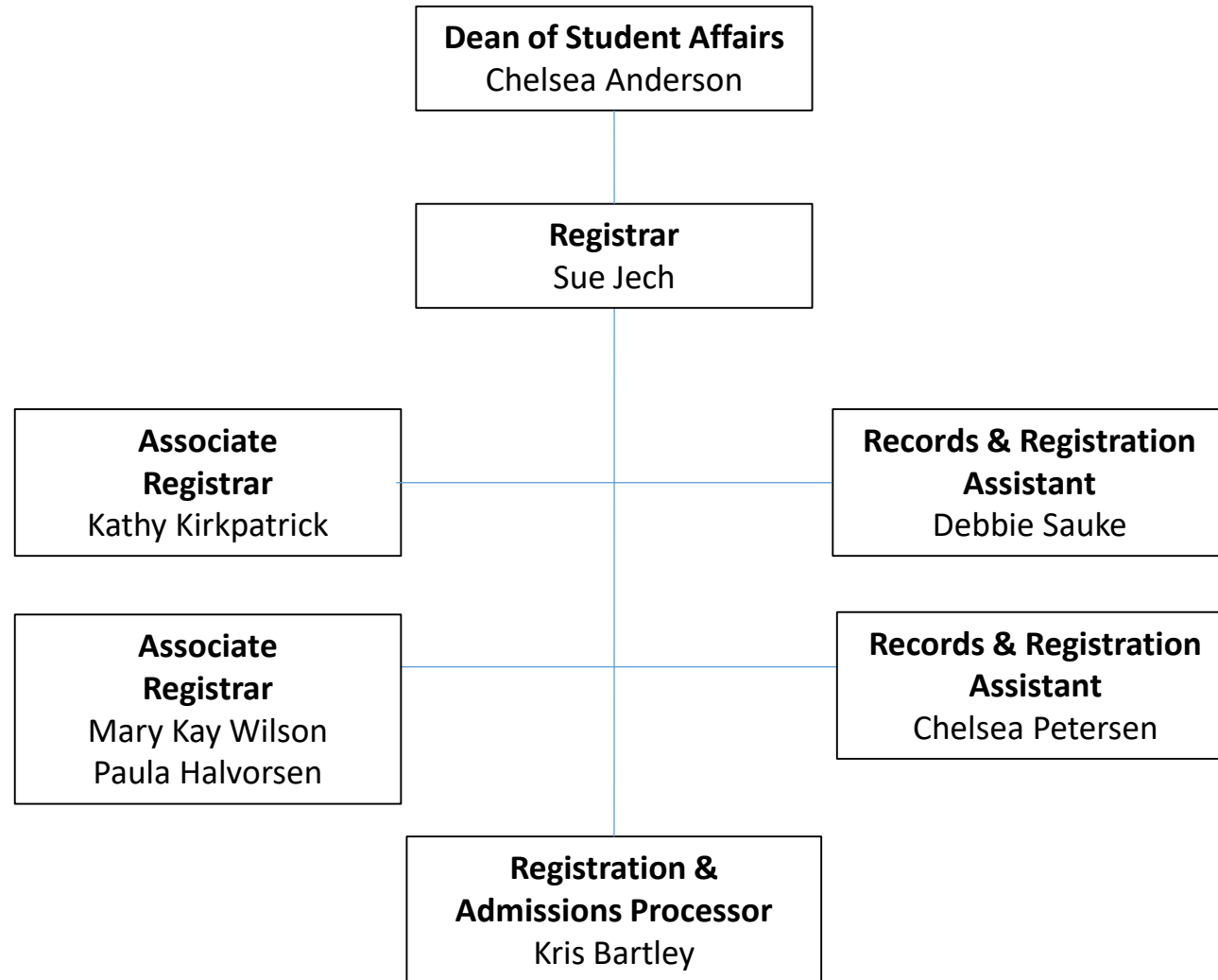


# Advising Services

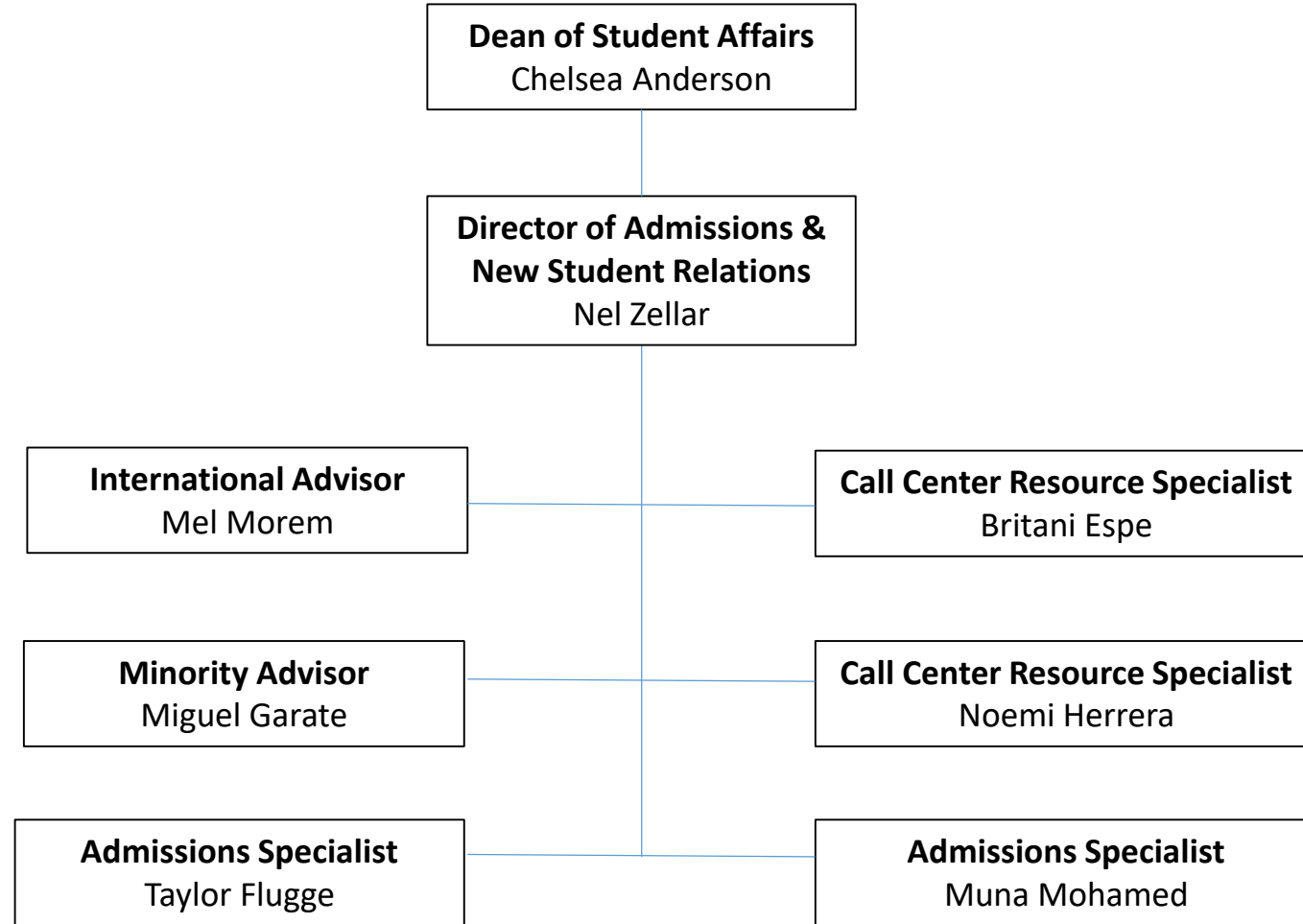




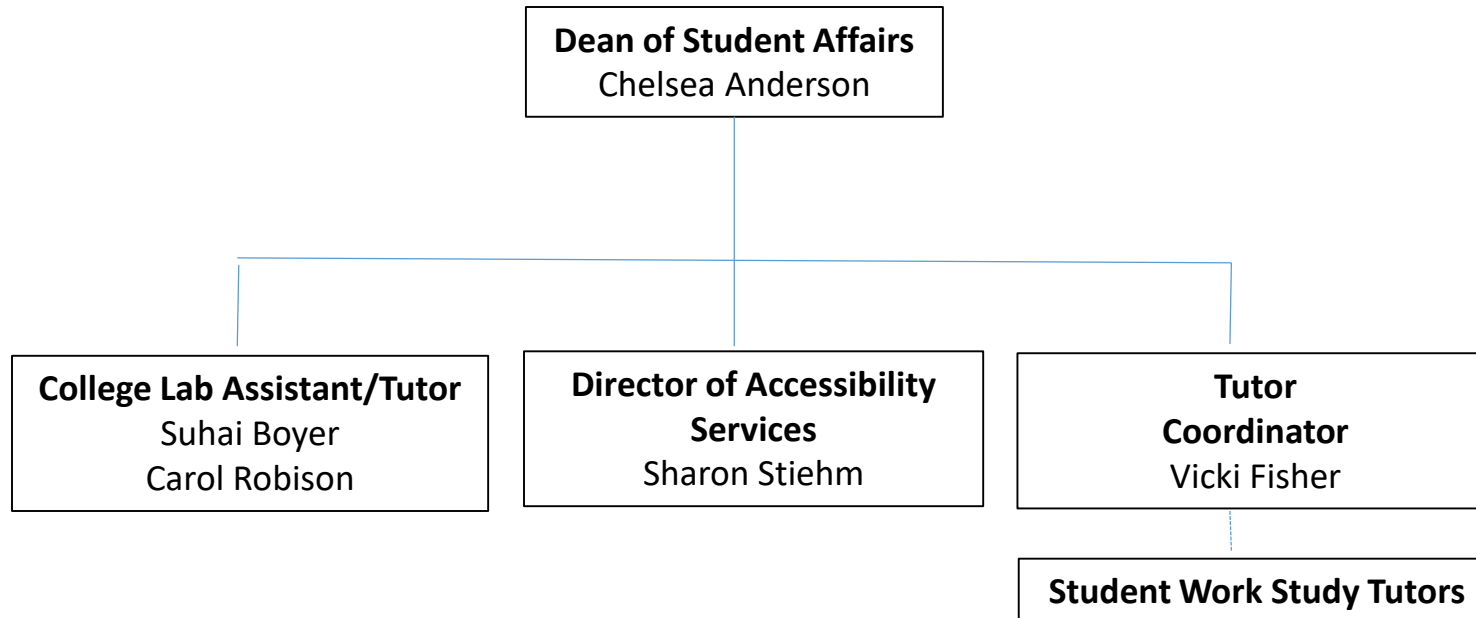
# Records & Registration



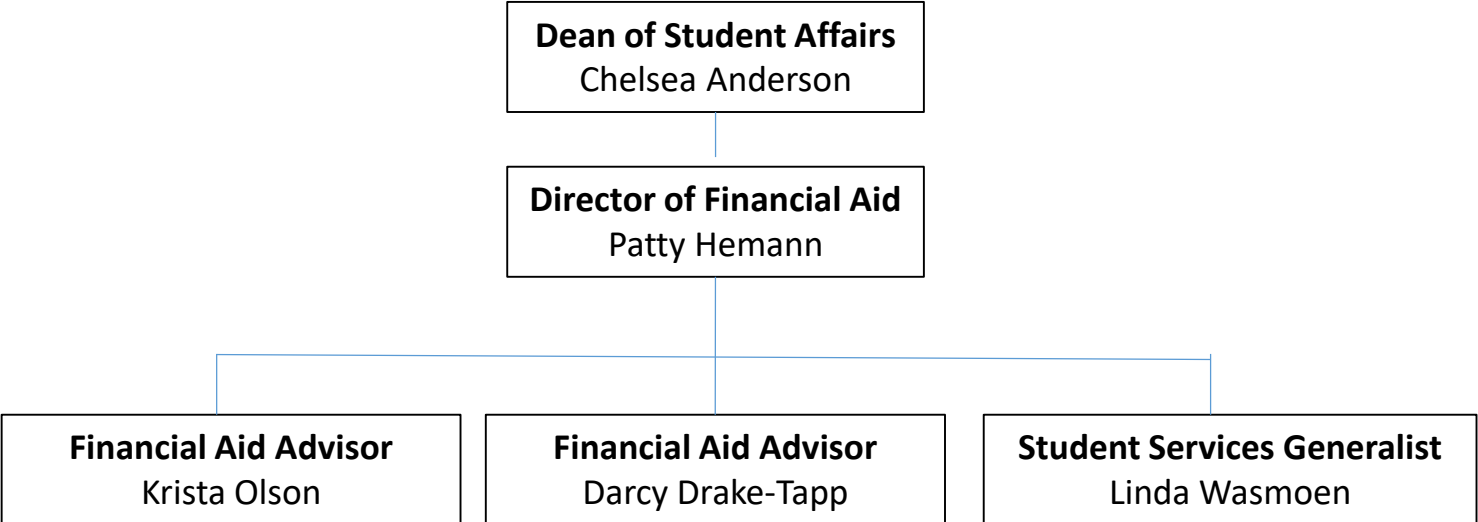
# Admissions



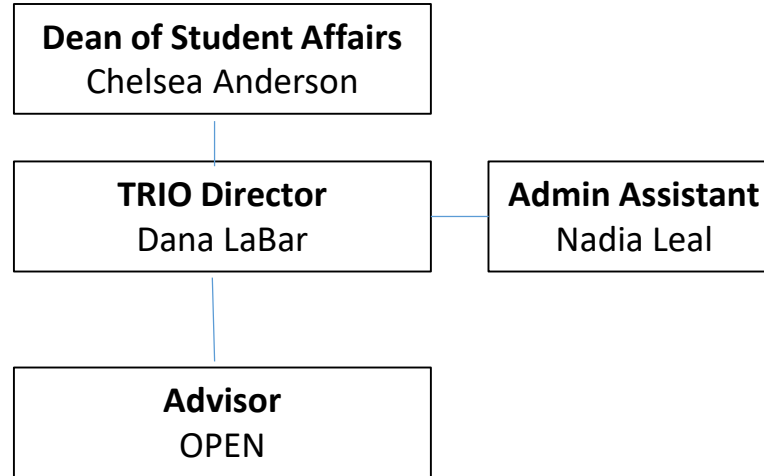
# Student Success Center



# Financial Aid



# TRIO/ Student Support Services



# Athletics

