



Organizational Chart 2020



RIVERLAND
Community College



MINNESOTA STATE

Organizational Charts

The departmental organizational charts for Riverland Community College are displayed below. Click on each link below to view detailed information.

- [Office of the President](#)
- [Academic & Student Affairs](#)
- [Communications, Media Relations & Marketing](#)
- [Customized Training](#)
- [Diversity, Grants & Institutional Research](#)
- [Finance and Operations](#)
- [Human Resources](#)
- [Institutional Advancement](#)
- [Technology & Learning Resources](#)

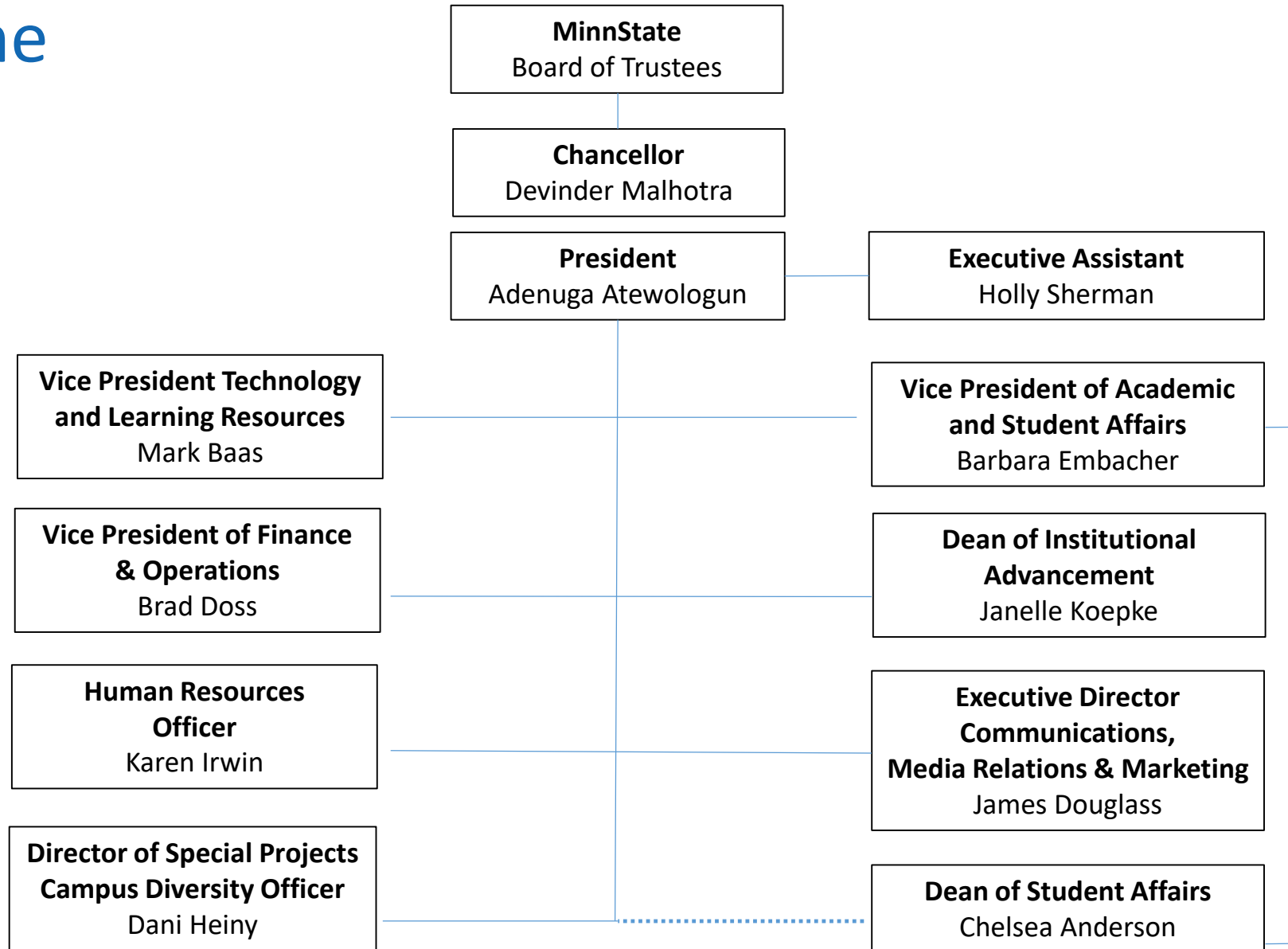
Academic Affairs

- [Agriculture, Trades, Technology, Transportation & Safety](#)
- [Liberal Arts, Public Service & Business](#)
- [Nursing, Health & Wellness](#)

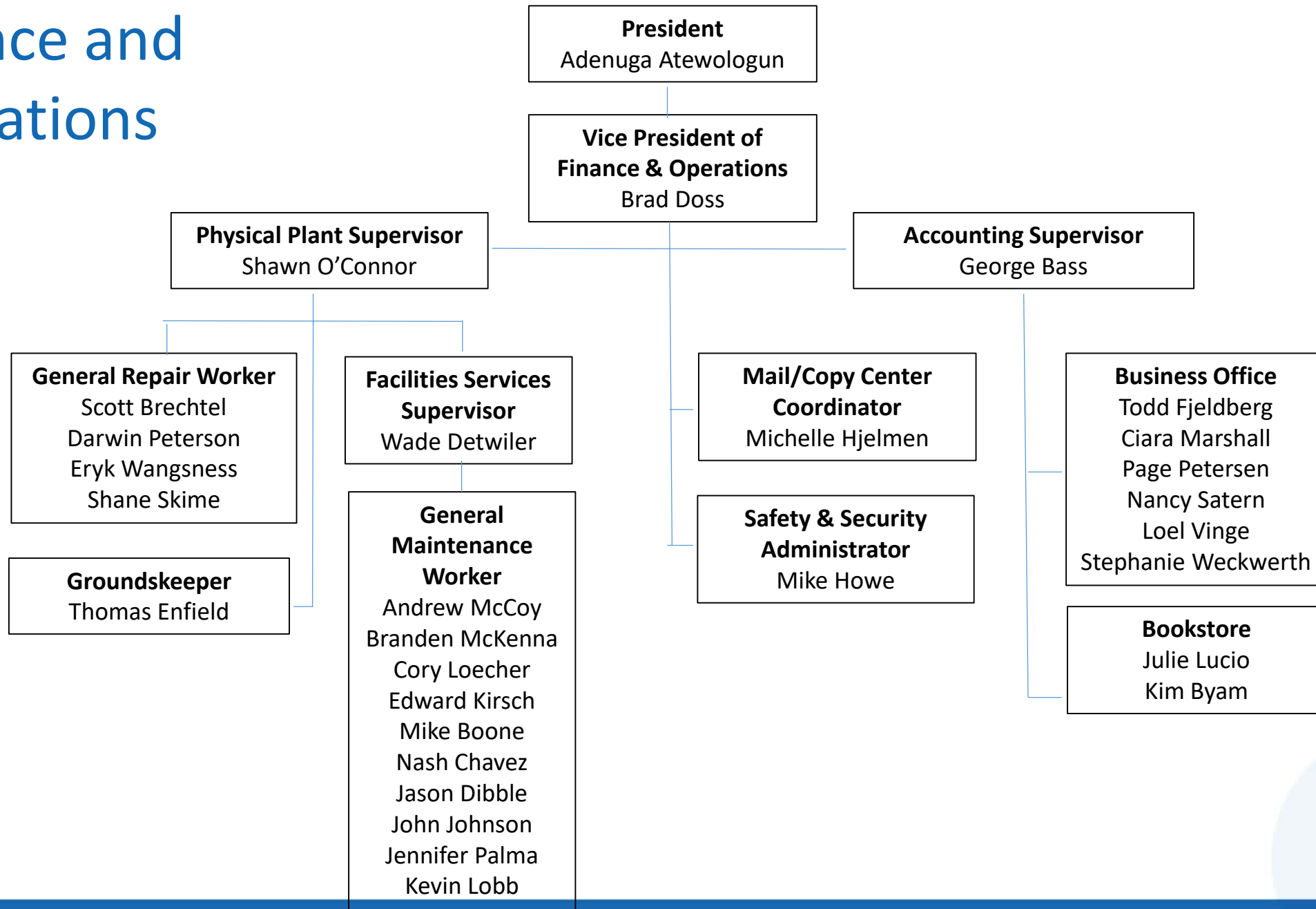
Student Affairs

- [Admissions](#)
- [Advising Services](#)
- [Financial Aid](#)
- [Records & Registration](#)
- [TRiO/Student Support Services](#)
- [Counseling](#)
- [Residential & Student Life](#)

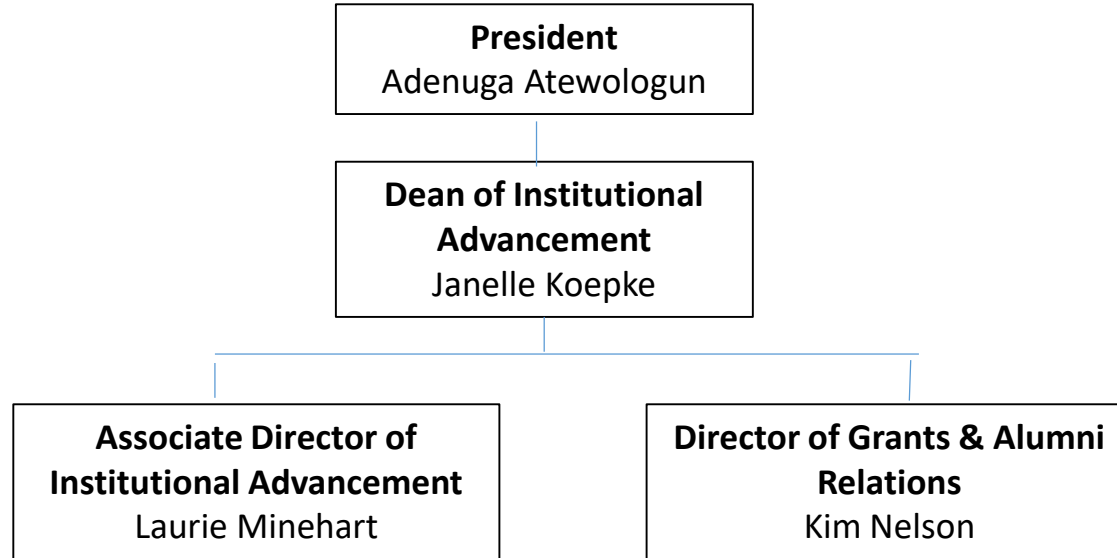
Office of the President



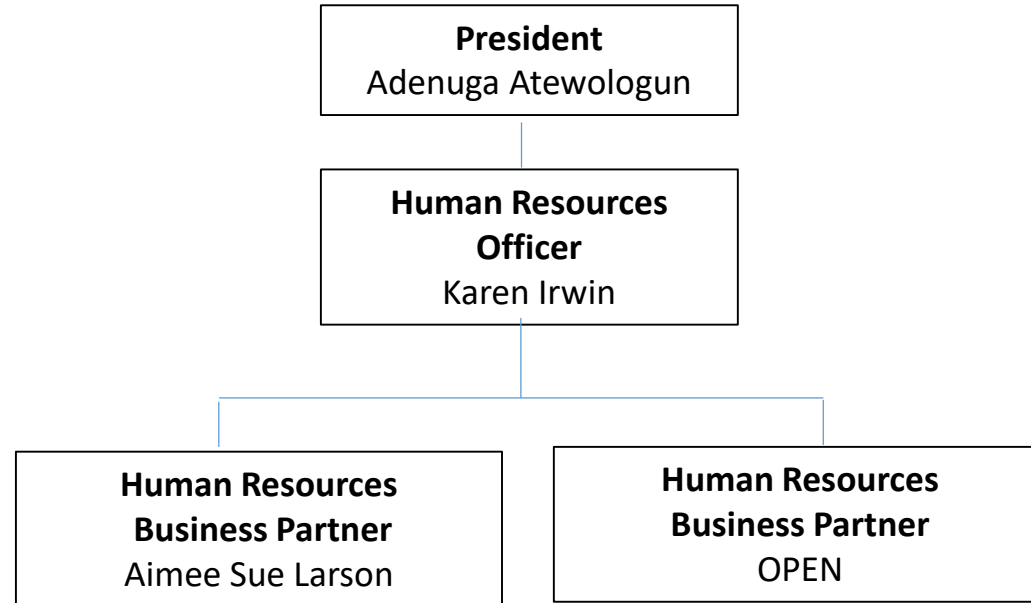
Finance and Operations



Institutional Advancement



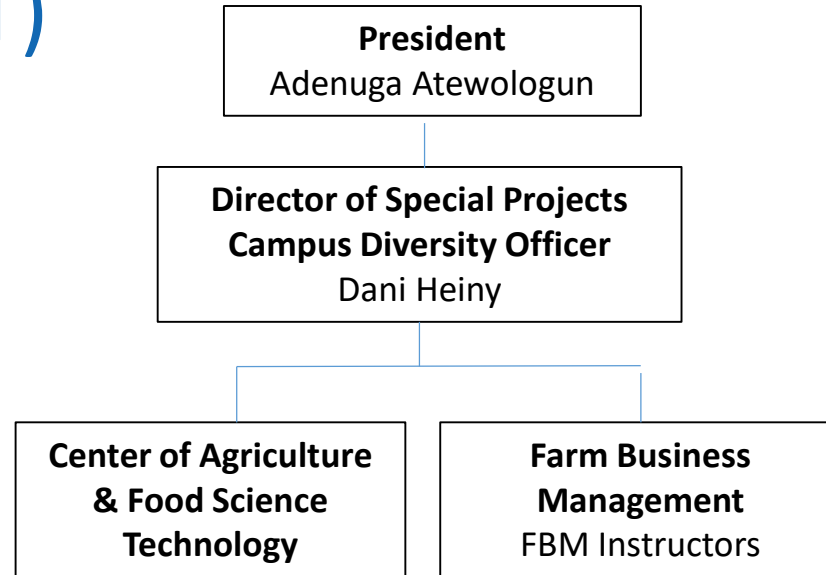
Human Resources



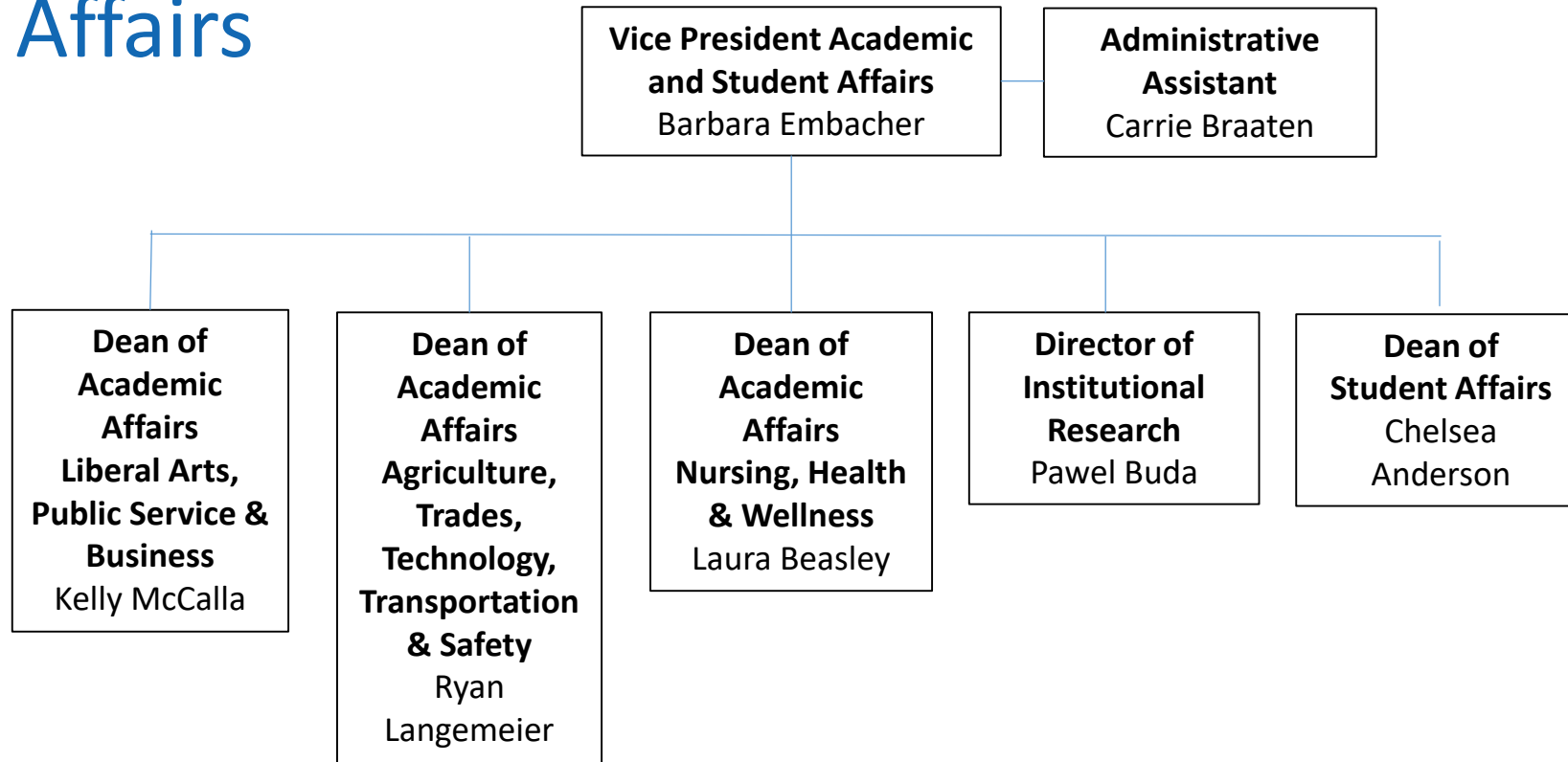
Communications, Media Relations & Marketing



Center of Agriculture & Food Science Technology (CAFST)

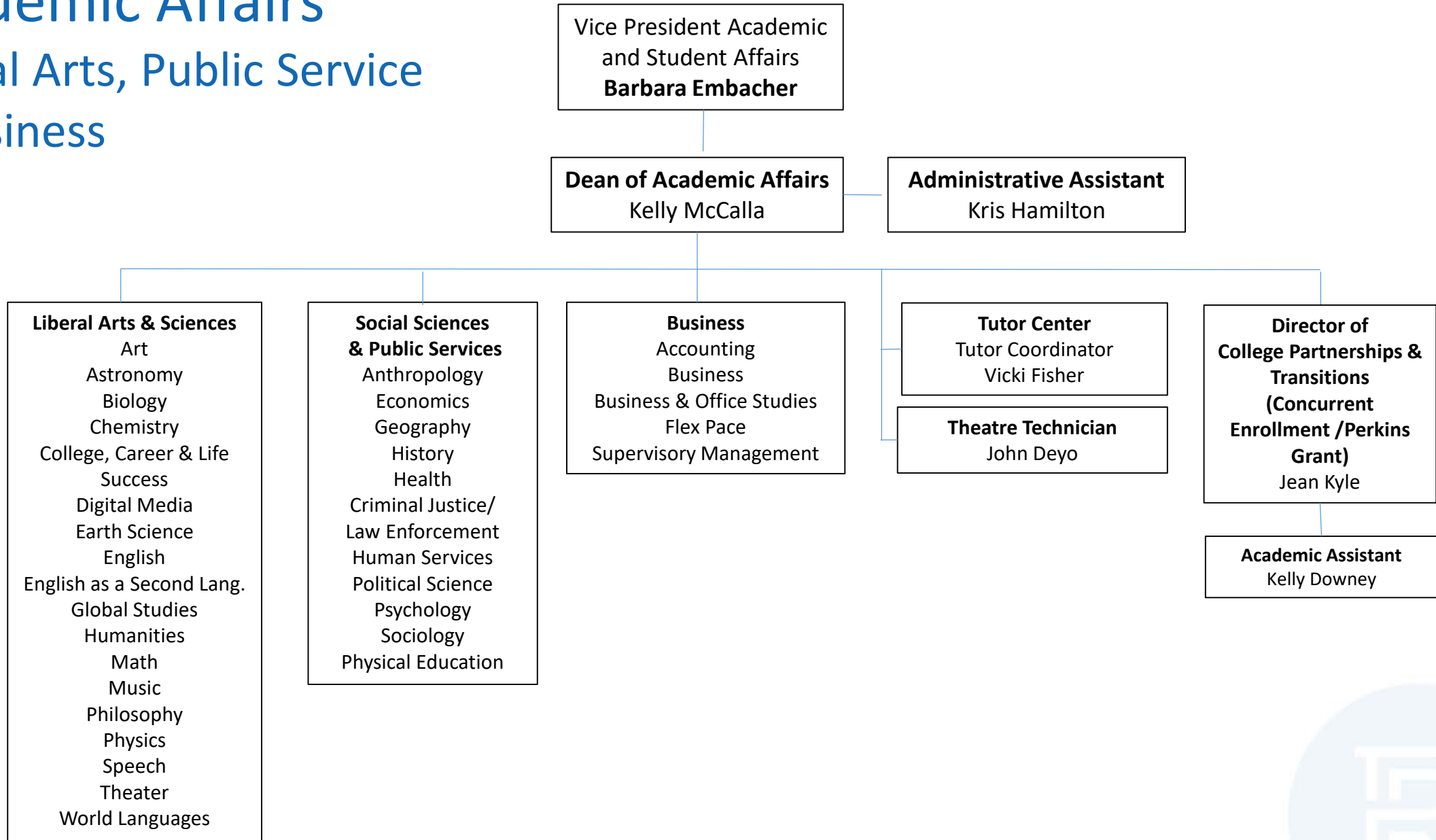


Academic and Student Affairs



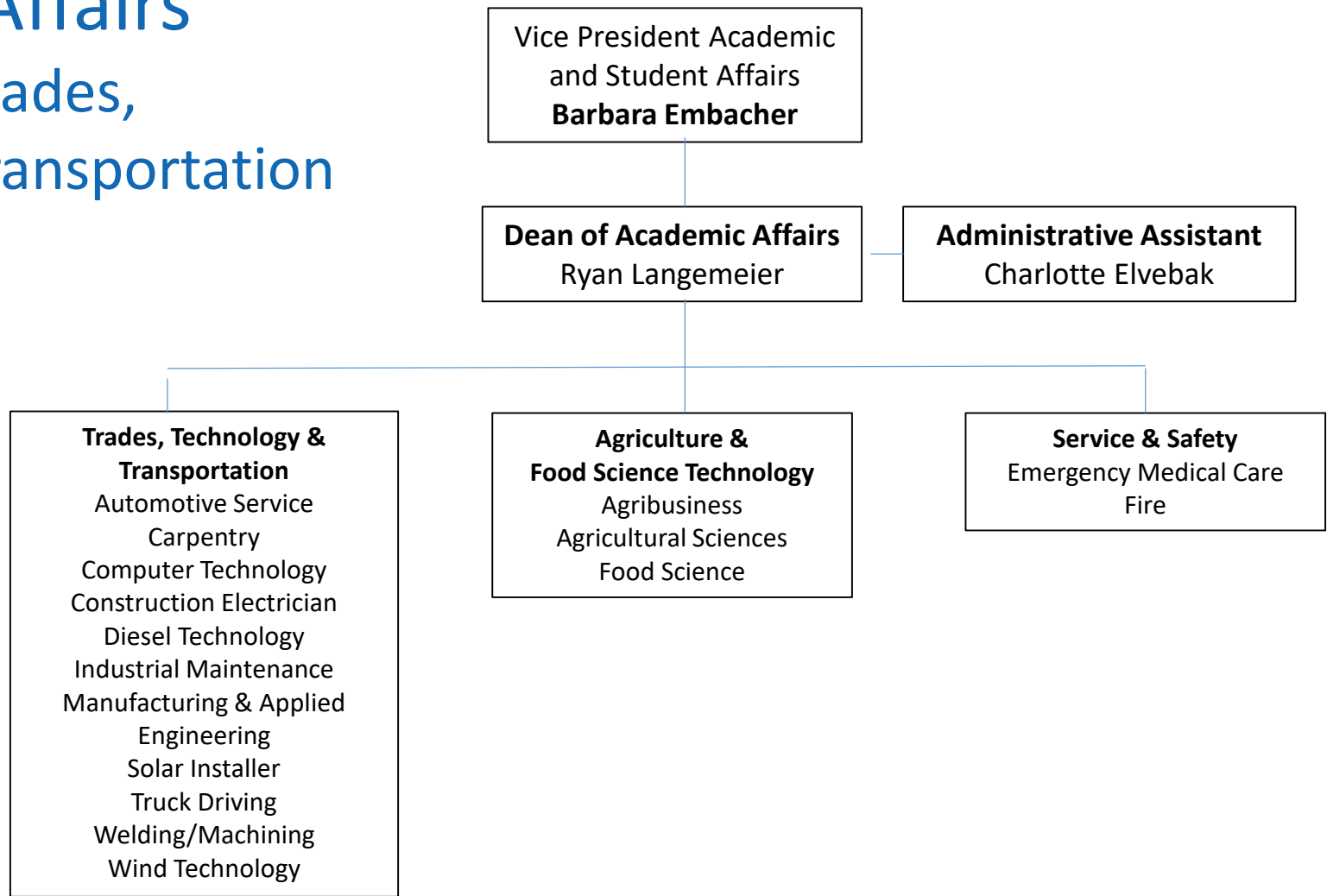
Academic Affairs

Liberal Arts, Public Service & Business



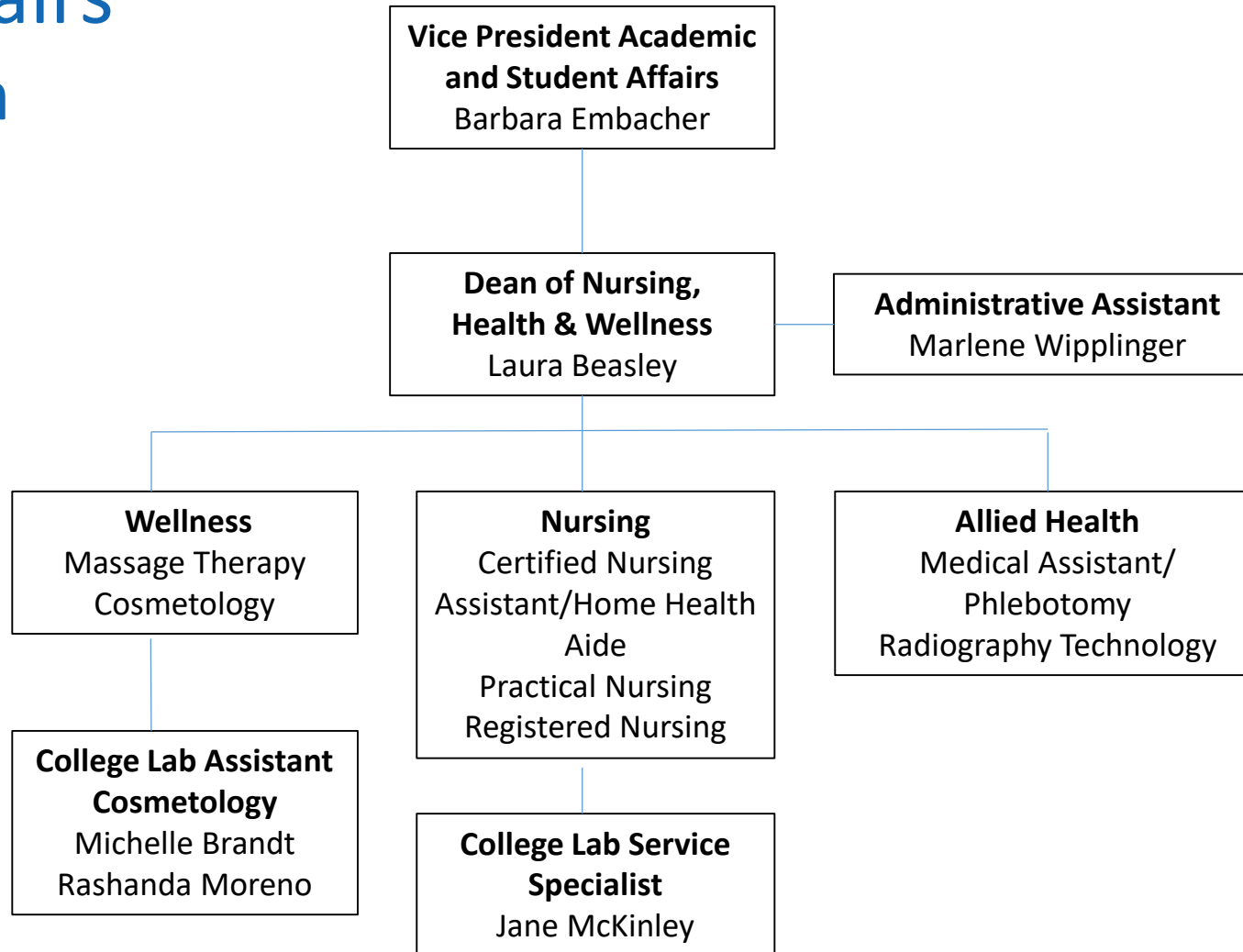
Academic Affairs

Agriculture, Trades,
Technology, Transportation
& Safety



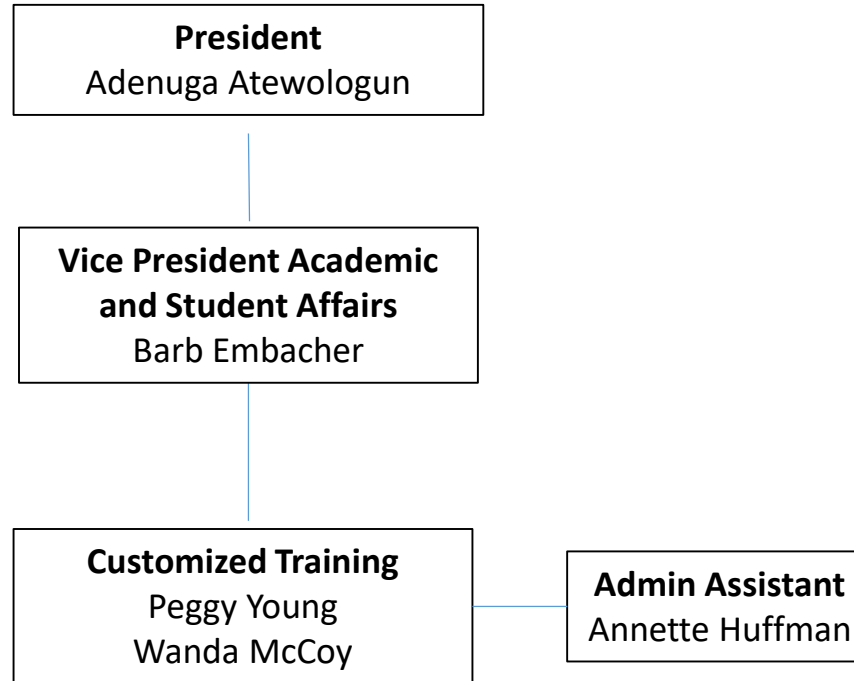


Academic Affairs Nursing, Health And Wellness

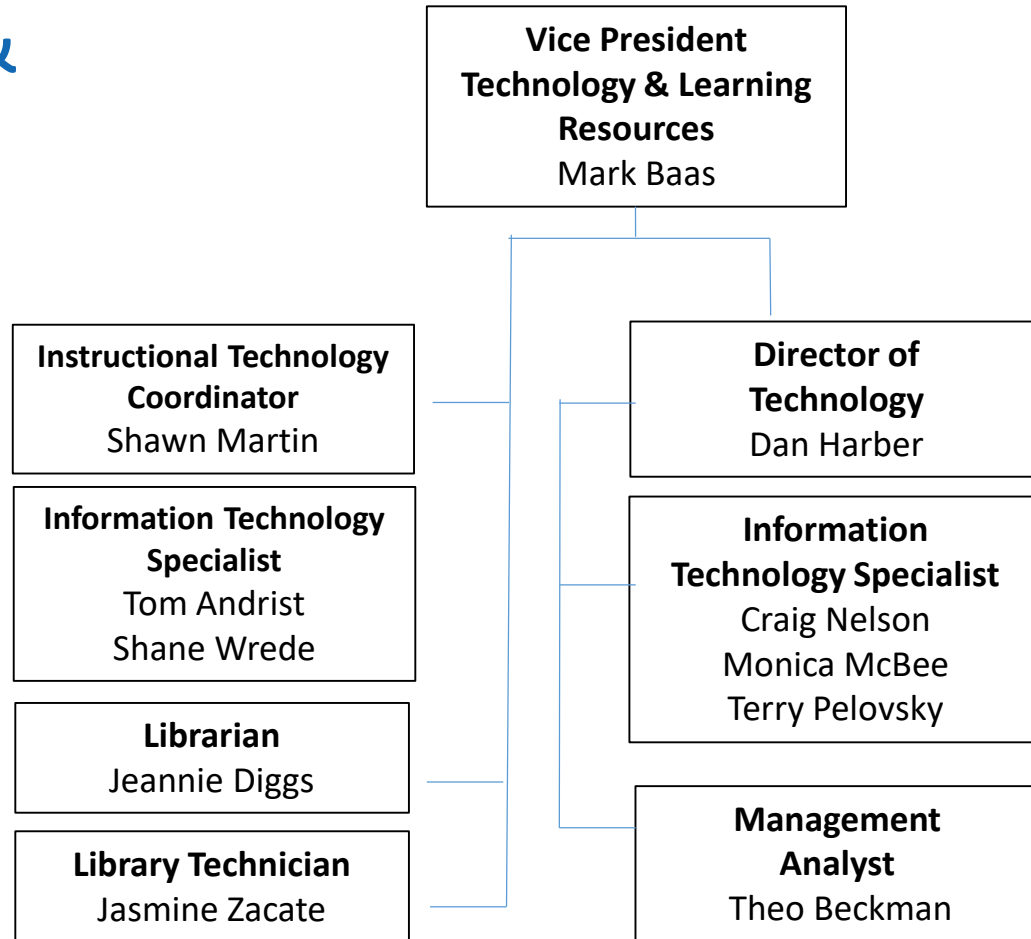




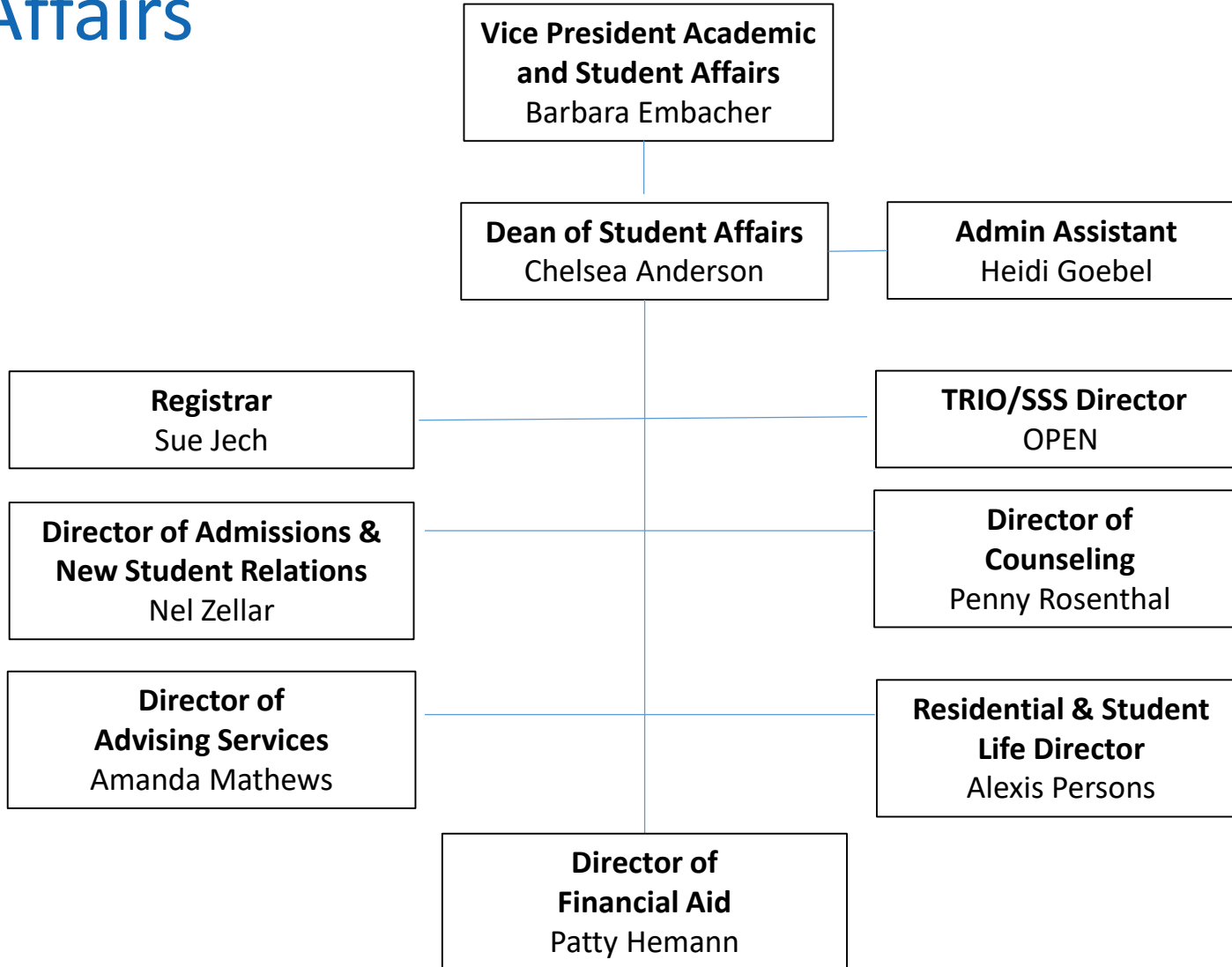
Customized Training



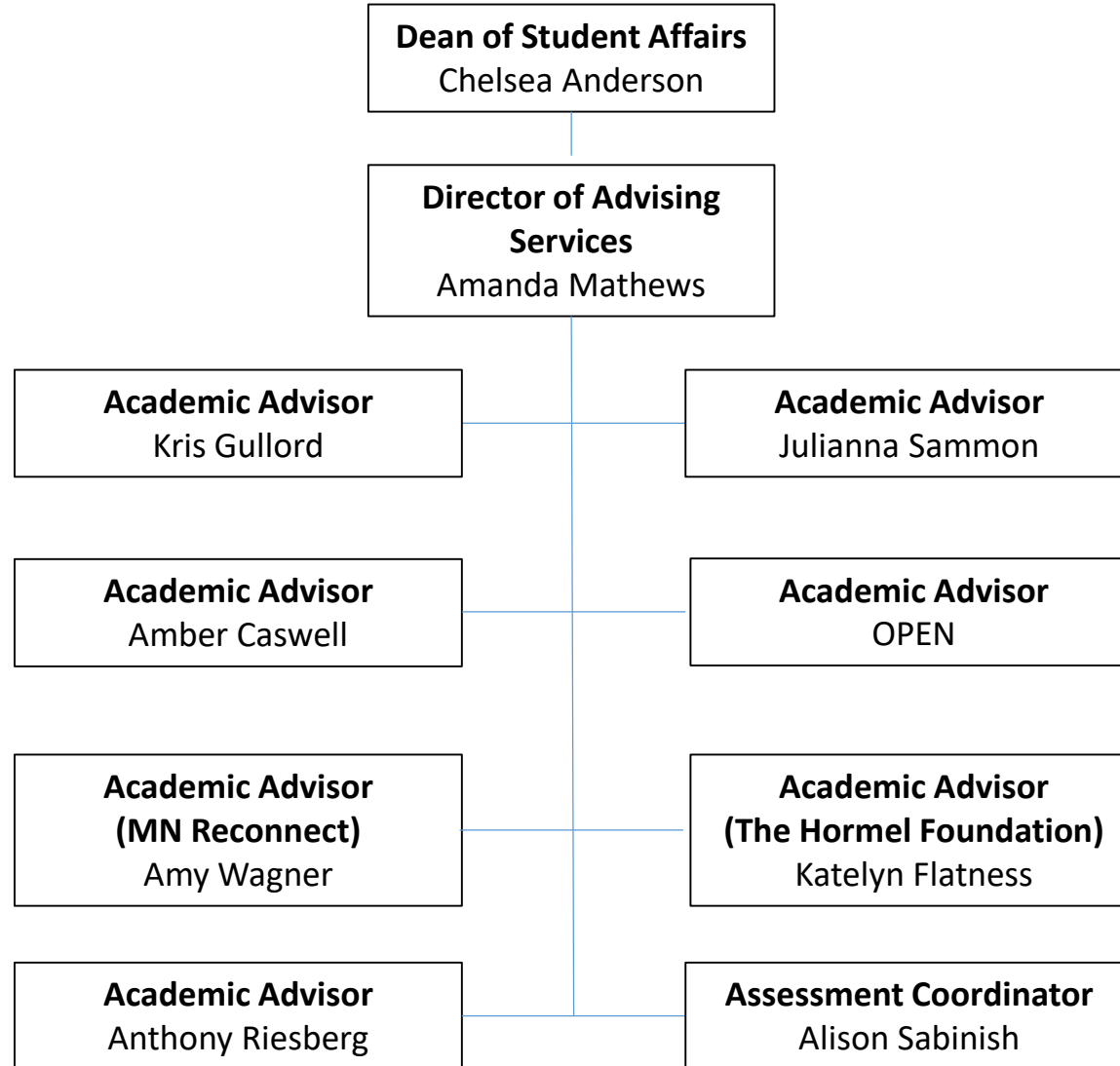
Technology & Learning Resources



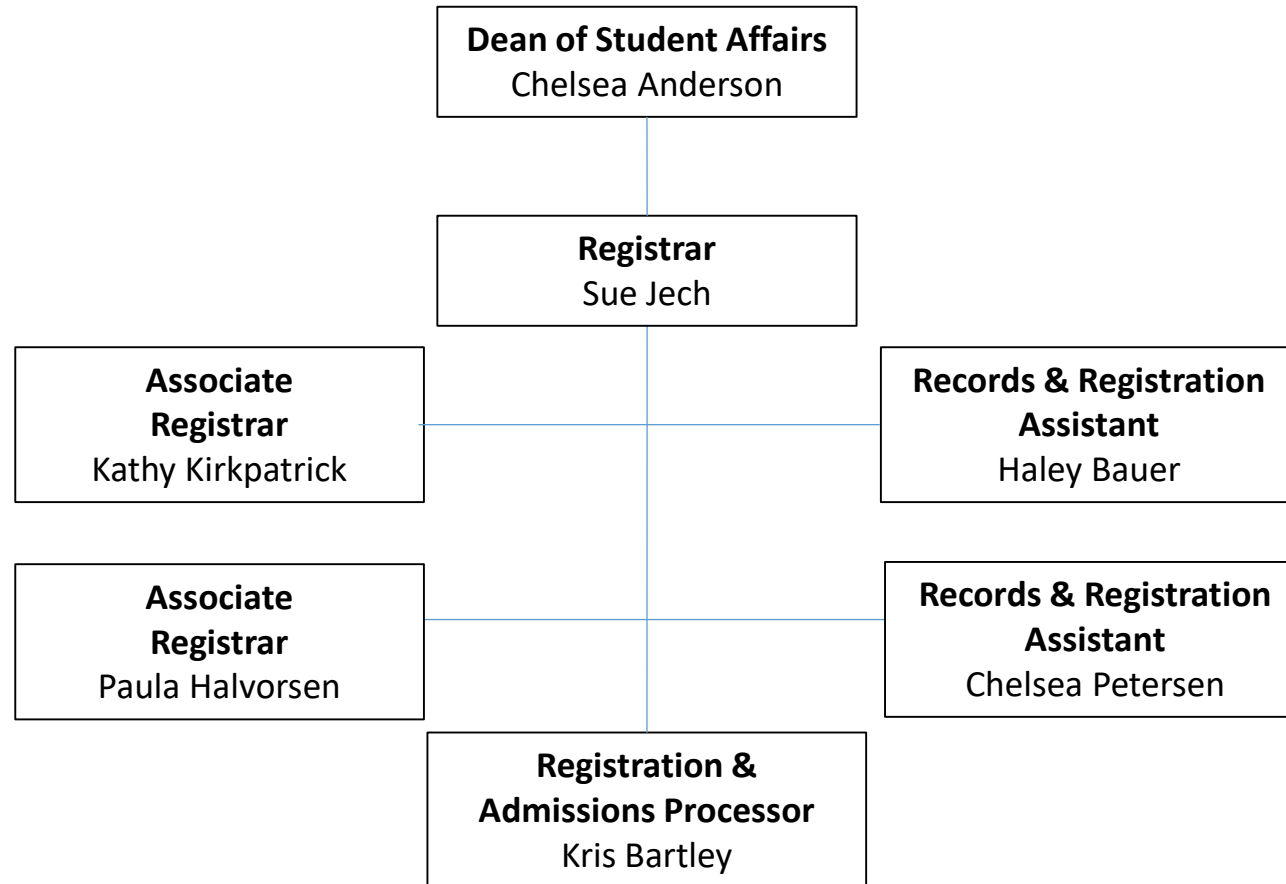
Student Affairs



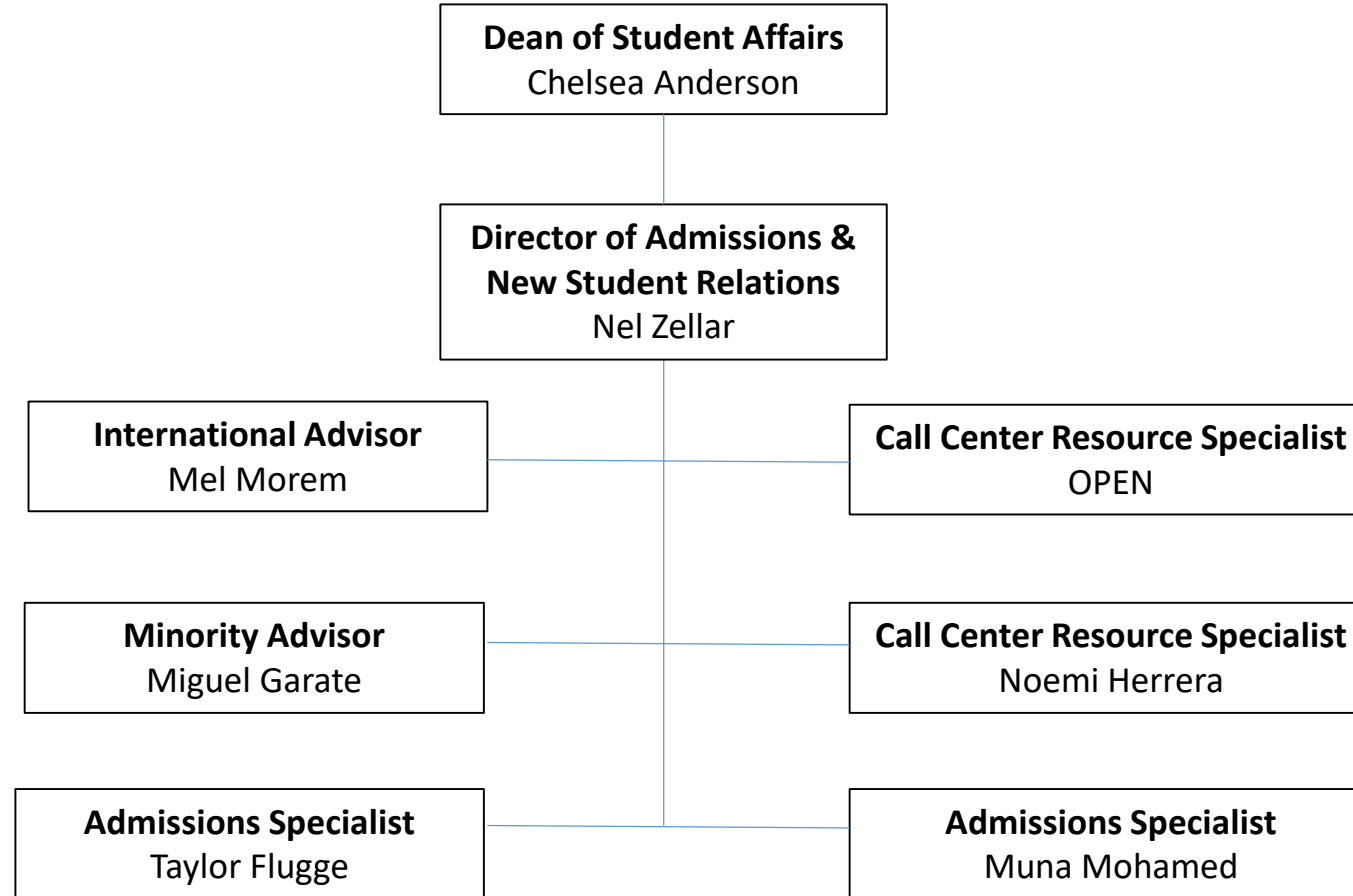
Advising Services



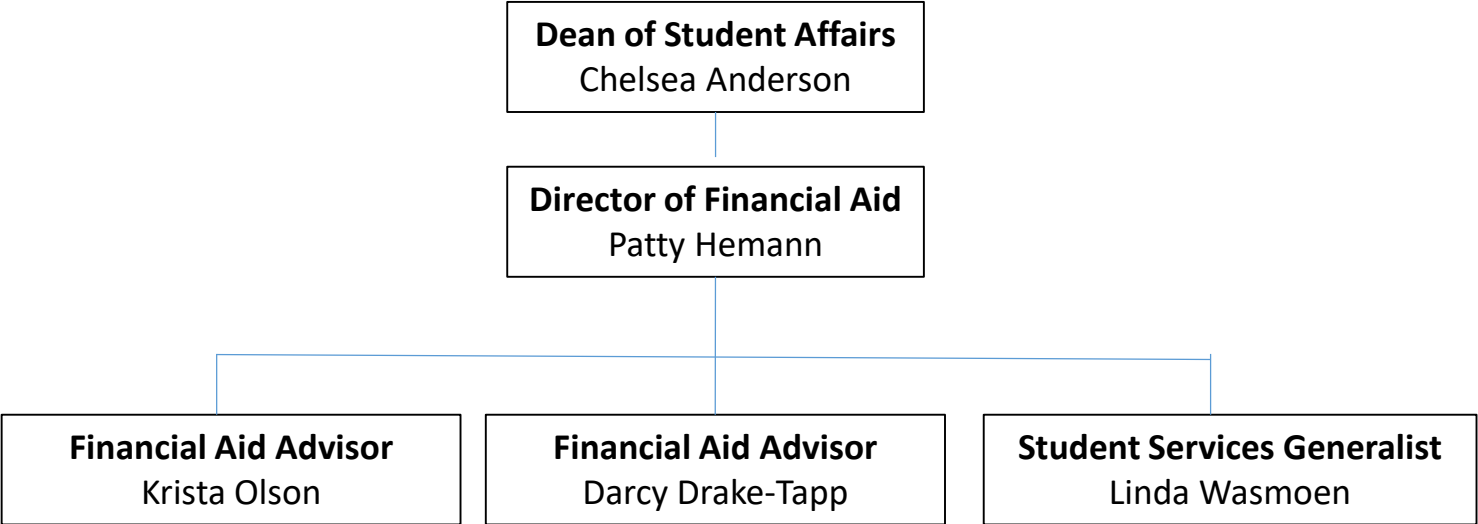
Records & Registration



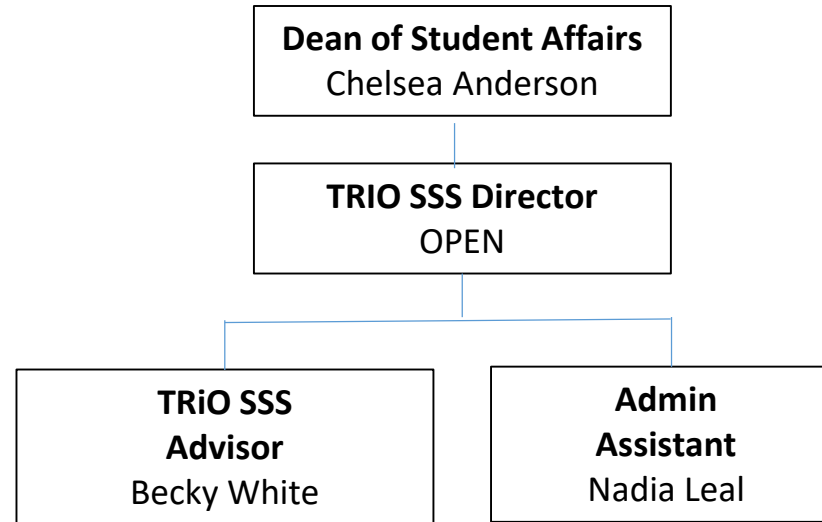
Admissions



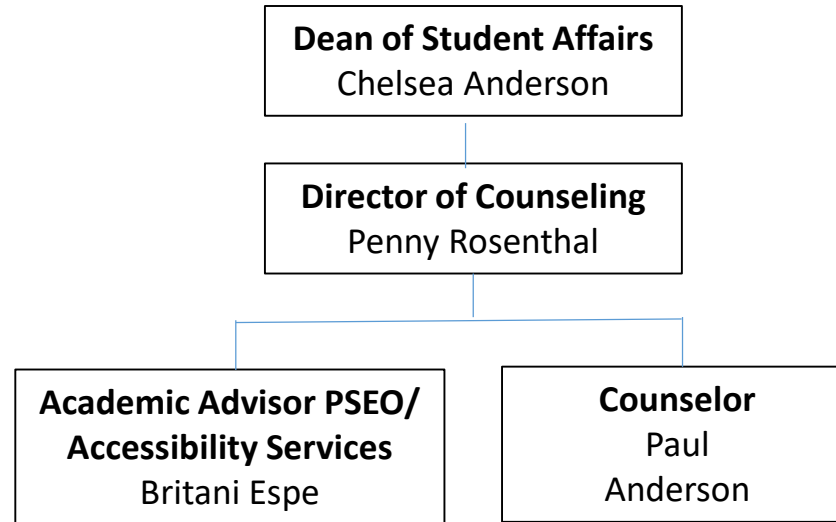
Financial Aid



TRIO/ Student Support Services



Counseling



Residential & Student Life

