

# Riverland Fact Sheet for Student Parents and Expecting Student Parents

2019-2020

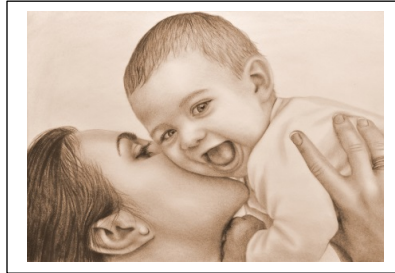
## Information for Pregnant & Parenting Students

### Minnesota State Board Policy

Board Policy 1B.1 prohibits discrimination and harassment against pregnant and parenting students. Please contact Ricki Walters at 507.433.0368 or at [ricki.walters@riverland.edu](mailto:ricki.walters@riverland.edu) to report concerns.

## The Fact Sheet

The Fact Sheet will provide you with key resources for prenatal care, child care, transportation, and housing.



## Housing Resources

- Housing Authority 433-1866 AU/377-4375 AL/444-4300 OW
- Riverland Student Housing  
[www.riverland.edu/student-housing/](http://www.riverland.edu/student-housing/)
- Housing Resource Guide – Riverland Student Services
- Welcome Center 434-2863

## Transportation Services

- Austin/Mower County Area Transit 433-2379
- Southern Minnesota Area Rural Transit (SMART)  
[smartbusmn.org](http://smartbusmn.org) 855-smart-b1

## Riverland Services to Parenting Students

- Counseling
- Student Service Centers
- TRIO-Student Support Services
- County Resource Guides (Counselors and Centers)

## Prenatal and Healthcare Services

• • •

- Family Planning Community Clinic 437-9701  
[familyplanningcommunityclinic.org](http://familyplanningcommunityclinic.org)
- [mnsure.org](http://mnsure.org)
- Minnesota Care  
[www.health.state.mn](http://www.health.state.mn)
- Family Planning Clinic 437-9740
- Mower County Health and Human Services 437-9701
- E-Health  
[www.mowerrefreshed.org](http://www.mowerrefreshed.org)
- Walk-In Clinic 433-1055
- Mayo Clinic Austin 433-8758  
Albert Lea 373-2384
- Parent Warmline 800-714-1416
- Planned Parenthood  
[plannedparenthood.org](http://plannedparenthood.org)
- Steele Co. Public Health 451-1124

## Child Care

• • •

- Parent Aware-child care rating service [parentawareratings.org](http://parentawareratings.org)
- Parent Resource Center 437-8330
- Child Care Resources 800-462-1660
- Post-Secondary Child Care Grant Program  
[www.riverland.edu/student-services/child-care-grant/](http://www.riverland.edu/student-services/child-care-grant/)
- Apple Lane Child Care 433-0070
- Albert Lea Community Child Care Center 373-7979